



SUPERSTAR®



G. SATURNE

BASE STATION - AM - FM - SSB - CW

Downloaded from www.cbradio.nl

CRT G. SATURNE

GÉNÉRALITÉS :

Modes Modulation	:	AM / FM / SSB (USB-LSB) / CW / PA	Export
Fréquences couvertes	:	28 055 Mhz à 28 495 Mhz	25 615 MHz à 28 315 MHz
Synthèse de fréquence	:	PLL synthétisé	
Fréquence de tolérance	:	+/- 0.005 %	
Fréquence stabilité	:	+/- 0.003 %	
Température de fonctionnement	:	- 30°C à + 50°C	
Micro Impédance	:	600 Ohms, pastille dynamique	
Alimentation	:	220 V, 50 Hz	
Consommation	:	90 W (AC 220 V)	
Antenne impédance/connection	:	50 Ohms (type SO 239)	
Semi-conducteurs	:	9 iC, 1 FET, 61 transistors	

ÉMETTEUR :

Puissance sortie antenne	:	CW/AM/FM 15W USB/LSB 25W
Fréquences parasites	:	60 Db
Taux modulation AM	:	Jusqu'à 100 %
Modes de modulation	:	BLU par mélangeur équilibré AM par modulation des collecteurs FM par diode vadicap excursion FM +/- Khz
Action du clarifier	:	+/- 5 Khz
Bande passante audio	:	400 Hz/5 Khz (AM, FM) 400 Hz/3 Khz (SSB)

RÉCEPTEUR :

Sensibilité	:	AM 1 μ V pour 10 Db S/B FM 1 μ V pour 20 Db S/B BLU 0.2 μ V pour 10 Db S/B USB/LSB 21 W
Sélectivité	:	AM/FM 5 Db à 4 Khz, 50 Db à 10 Khz
Rejecteur fréquence image	:	Supérieur à 50 Db
Rejecteur iF	:	Supérieur à 80 Db à 455 Khz
Action du Cag	:	de 10 μ V à 0.4 V pour une variation de niveau inférieur à 12 Db
Action du squelch	:	Ajustable à partir de 0.7 μ V
Principe réception	:	Double changement de fréquence (10.685 Mhz et 455 Khz)
Puissance audio	:	3 Watts sur 8 Ohms

Usage Radioamateur



CRT & **SUPERSTAR**[®]

481, 524, rue de la Pièce Cornue - Zone Industrielle
21160 Marsannay-la-Côte - FRANCE

Tél : (33) 03 80 51 90 11
Fax : (33) 03 80 51 90 28 - Telex : 351 447

S.A. au capital de 5 000 000 FF

DISTRIBUTEUR AGRÉÉ :

SERVICE MANUAL

CRT G.SATURNE

TABLE OF CONTENTS

1. Section 1. Spacification
2. Section 2. Installation
 - Location / Connection :
 - Noise Interference
 - Antennas
 - Remote Speaker
 - Public Address
3. Section 3. Control Function
 - Rear Panel Connectors
 - Operating Procedure To Receiver
 - Operating Procedure To Transmit
 - Public Address Operation
 - SWR Measurement
 - Alternate Microphones and Installation
 - Frequency / Channels Chart
4. Section 4. Block Diagram
 - Schematic Diagram
 - PCB Layout Drawing

Section 1: Specification

Thank you for your confidence in selecting base station two-way radio equipment. We know you'll find your transceiver as exciting as it is practical. Many years of valuable experience designing electronic products are behind our two-way communications systems. Only the highest quality components are incorporated into base station radios to assure reliability and maximum performance.

Installing and operating the base station radio is not complicated, but the flexibility provided by its numerous operating features may not be fully appreciated until a little time is spent becoming familiar with its controls and connections. It will be to your advantage to save all the packing materials—cartons, fillers, cushioning, etc., they will prove valuable in preventing damage should you ever have occasion to transport or ship the your base station radio Dealer.

Specifications

General

Channels	271 channels
Modulation Modes	CW, FM, AM, USB, LSB
Frequency Range	(H) 26.065 to 28.765 MHz (L) 25.615 to 28.315 MHz
Frequency Control	Phase-locked synthesizer
Frequency Tolerance	± 0.005%
Frequency Stability	± 0.003%
Operating Temperature Range	— 30°C to + 50°C
Microphone	Plug-in [4-pin], 600 Ohm dynamic type
AC Input Voltage	110V 60Hz (220V 50Hz)
AC Power Consumption	90W
Antenna Connectors	Standard SO-239 type
Semiconductors	9 IC, 1 FETs, 61 Transistors
Meter #1	Indicates relative RF power output/antenna SWR
Meter #2	Indicates received signal strength

Transmitter

Power Output

CW/AM/FM 10W

LSB/USB 21W

SSB Generation

Dual-balanced modulation

AM Modulation

Class B amplitude, collectors modulation

AM Modulation Capability

Up to 100%

FM Deviation

± 1.5 KHz @ 1,250 Hz 20mV audio

Clarifier Range

± 5 KHz

Harmonic and Spurious Emission

Better than 60 dB

AM/FM Frequency Response

400 to 5,000 Hz

SSB Frequency Response

400 to 3,000 Hz

Output Impedance

50 Ohms unbalanced

Output Indicators

RF Meter shows relative RF output power.

Receiver

AM Sensitivity

1 μ V for 10 dB S/N

FM Sensitivity

1 μ V for 20 dB S/N

SSB Sensitivity

0.2 μ V for 10 dB S/N

AM/FM Selectivity

5 dB at 4 kHz, 50 dB at 10 kHz

SSB Selectivity

5 dB at 2 kHz

Image Rejection

More than 50 dB

IF Rejection

More than 80 dB at 455 kHz

AGC

Change in audio output less than 12 dB:
from 10 μ V to 0.4V

Squelch

Adjustable-threshold less than 0.7 μ V

Audio Frequency Response

400 to 2,500 Hz

Distortion

Less than 10% at 2 watts output into 8
Ohms

Adjacent Channel Rejection

> 75 dB

Cross Modulation

> 50 dB

Intermediate Frequency

10.695 MHz [AM-1st, SSB], 455 KHz
[AM-2nd]

Clarifier Range

± 5 KHz

Noise blanker

IF single gate type

Audio Output Power

More than 3 watts into 8 Ohms

Built-in Speaker

8 Ohms, dynamic

External Speaker (optional)

Disables internal speaker when connected

Section 2: Installation

Location/Connection

The transceiver should be placed in a convenient operating location close to an AC power outlet and the antenna leadin cable(s).

The transceiver is attached with the AC power cord set. Proceed as follows to complete all necessary connections to the transceiver.

- 1) Your transceiver has standard antenna connectors of type SO-239 both located on rear panel; for easy connection to standard PL-259 coax plugs. If the coax antenna cable must be made longer, use coax cable with impedance of 50 ohms, frequency ratings for 27 MHz, and use only enough cable to suit your needs. This will insure a proper impedance match and maximum power transfer from the transmitter to the antenna.
- 2) **AC Power Operation:** Use 110 (220) volts AC power for the base station.

Noise Interference

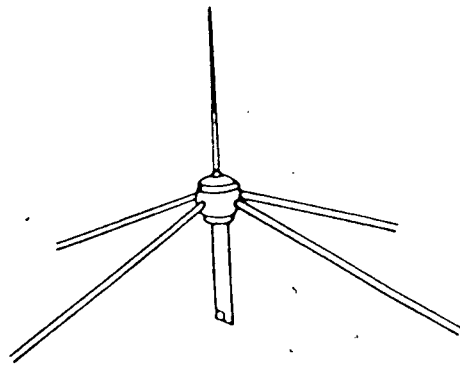
There are several kinds of noise interfering you may encounter in base station operation. Some of these noise sources are; fluorescent buzz, nearby commercial broadcast, electrical appliance, lawnmower, and electrical storms, etc. Commercial products are available to reduce interference from these sources. Consult your dealer or professional amateur radio supply shops.

Antennas

For best transmission and reception, your transceiver should use an antenna especially designed for a frequency of 27 MHz. Antennas are purchased separately and include installation instructions. Numerous types of antennas are available that range from emphasis on ease of installation to emphasis on performance. Often the difference in performance between many of the antenna is modest.

1) Vertical Ground Plane Antennas

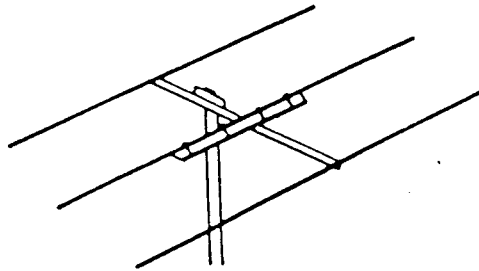
These are omnidirectional antennas that provide optimum performance for contacting other fixed stations using vertical type antennas in addition to all mobile stations. For mediumlong range communications work.



Ground Plane

2) Directional Beam Antennas

Highly efficient and directional antennas generally intended for fixed-to-fixed very long range communications.



Directional Beam
Antenna

Remote Speaker

The external speaker jack (EXT. SP) on the rear panel is used for remote receiver monitoring. The external speaker should have 8 ohms impedance and be able to handle at least 3 watts. When the external speaker is plugged in, the internal speaker is disconnected.

Note: The PHONE jack on the front panel overrides both external and internal speakers. When the plug from a headphone is plugged to the PHONE jack, both internal and external speakers are silenced simultaneously.

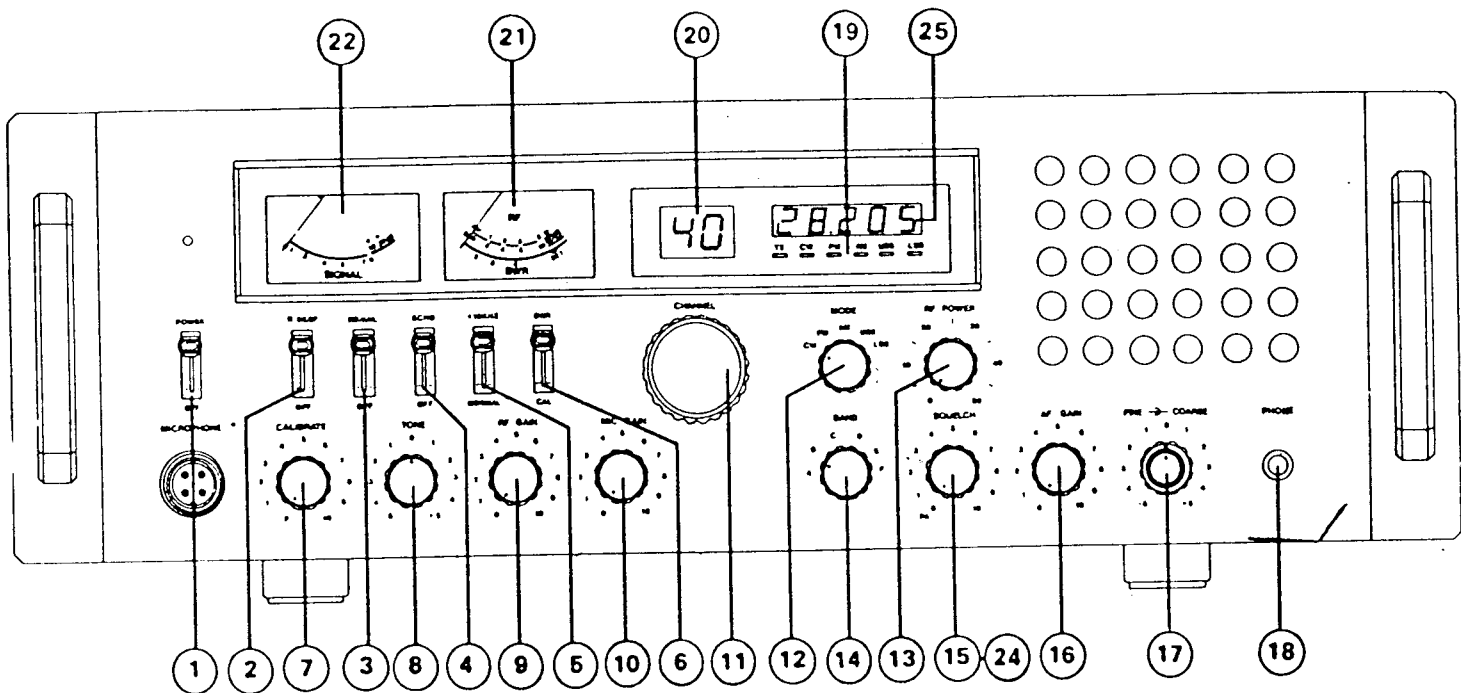
Public Address

An external 8 ohm, 3 watt speaker must be connected to the PA jack located on the rear panel when the transceiver is used as a public address system. The speaker should be directed away from the microphone to prevent acoustic feedback. Physical separation or isolation of the microphone and speaker is important when operating the PA at high output levels.

Section 3: Operation

Controls/Indicators

There are 17 controls and 10 indicators on the front panel.



1. Power/On-off

Place in Power (lever up) position to apply power to the unit.

2. RB Switch

The switch activates the ROGER BEEP circuit when placed in RB (lever up) position.

3. NB Switch

This switch activates the noise blanker circuit in the audio when placed in NB (lever up) position.

4. ECHO Switch

Set this switch to ECHO when you desire to add an echo effect to your transmitting voice. This switch has no effect on receiving.

5. +10KHz Switch

This switch activates the frequency is shifted 10 KHz up. On following channels. A channel can be used by setting this switch to + 10KHz position.

Normal	+ 10 KHz
3	3A
7	7A
11	11A
15	15A
19	19A

6. SWR-Calibrate Switch

This switch changes the SWR meter function in two ways:

- **CALIB** (lever down): Used to calibrate the SWR Meter before measuring your antenna SWR ratio.
- **SWR** (lever up): Used to directly read the SWR of antenna connected to the unit. See Accessory Circuit Operation.

7. Calibrate Control

This control is used for calibrating the SWR meter for accurate SWR readout in conjunction with the SWRCALIB Switch.

Note: So that the meter functions as RF power meter, be sure to set this control to fully counterclockwise position marked **RF**.

3. Tone Control

This changes tonal sound quality when receiving. Clockwise rotation will emphasize the high tone.

9. RF Gain

This control is used primarily to optimize the reception in strong signal areas. Under normal operating conditions the control should be turned fully clockwise. When strong overloading or distorted signals are received rotate this control counterclockwise to reduce gain.

Note: The Squelch Control 15 may require readjustment with reduced RF Gain control.

10. Microphone Gain

A preamplifier circuit is built into this unit to increase microphone gain. Experiment with this control for the setting that will best suit your individual use.

11. Channel Selector

Has 40 detents in a turn and selects one of the channels desired. Use the Channel selector in conjunction with the Band Select switch. The selected Channel is digitally displayed in the window above the selector.

12. Mode Selector

Selects the mode of operation in either CW, standard FM, AM or USB and LSB. Transmissions in any mode can only be communicated to stations operating in the same mode.

13. RF Power

This control that to adjust the RF power output level you want in AM or FM transmission.

14. Band Select Switch

Used with the channel selector. Selects one of 6 bands of 40 frequencies. See back cover to page 11 for information of channel provision and frequencies.

15. Squelch

This control is used to cut off or eliminate receiver background noise in the absence of an incoming signal. For maximum receiver sensitivity it is desired that the control be adjusted only to the point where the receiver background noise or ambient background noise is eliminated. Turn fully counterclockwise then slowly clockwise until the receiver noise just disappears. Any signal to be received must now be slightly stronger than the average received noise. Further clockwise rotation will increase the threshold level which a signal must overcome in order to be heard. Only strong signals will be heard at a maximum clockwise setting.

16. AF Gain

Permits you to adjust the listening level when receiving.

17. Coarse/Fine Control

Allows variation of the receiver operating frequencies above and below the assigned frequency. ~~Although this control is intended primarily to tune in SSB signals, it may be used to optimize AM/FM signals as described in the Operating Procedure Paragraphs. Coarse and Fine operates both TX/RX (or Fine only in RX).~~

18. Phone Jack

Accepts a plug from a headset of 4 to 32 Ohm impedance. Insertion of the plug will silence the built in speaker (and external speaker connected to External Speaker jack).

19. Function Indicators

LED indicators located in the LED area permit you to know instantly the mode to which the unit is engaged. **On Air:** Lights up during transmit mode indicating you are on-the-air.

CW-FM-AM-USB-LSB: Indicates a corresponding mode selected by the Mode selector 12.

20. Channel Readout

This is the LED [light emitting diode] digital readout to indicate the channel selected by the Channel selector.

21. Power/SWR Meter

Used for two purpose — to indicate relative transmitter power when transmitting and to indicate antenna SWR [standing wave ratio]. Note that the power meter has separate scales for AM (FM) and SSB (CW) transmission, respectively.

22. S [Signal] Meter

The left hand meter provides a relative indication of the signal strength of a received signal in S units during reception. Note that SSB signals will respond this meter only during voice modulation. This being due to the fact that SSB transmissions do not contain a continuous RF carrier as is found on AM or FM and CW.

23. Push-to-Talk Microphone

The receiver and transmitter are controlled by the ~~Push-to-Talk~~ switch on the microphone. Press the switch and the transmitter is activated, release the switch to receive. When transmitting, hold the microphone two inches from the mouth and speak clearly in a normal voice. The radio comes complete with the low impedance dynamic microphone (supplied).

Note: Depressing the Push-to-Talk switch on the microphone is also required to activate the PA system.

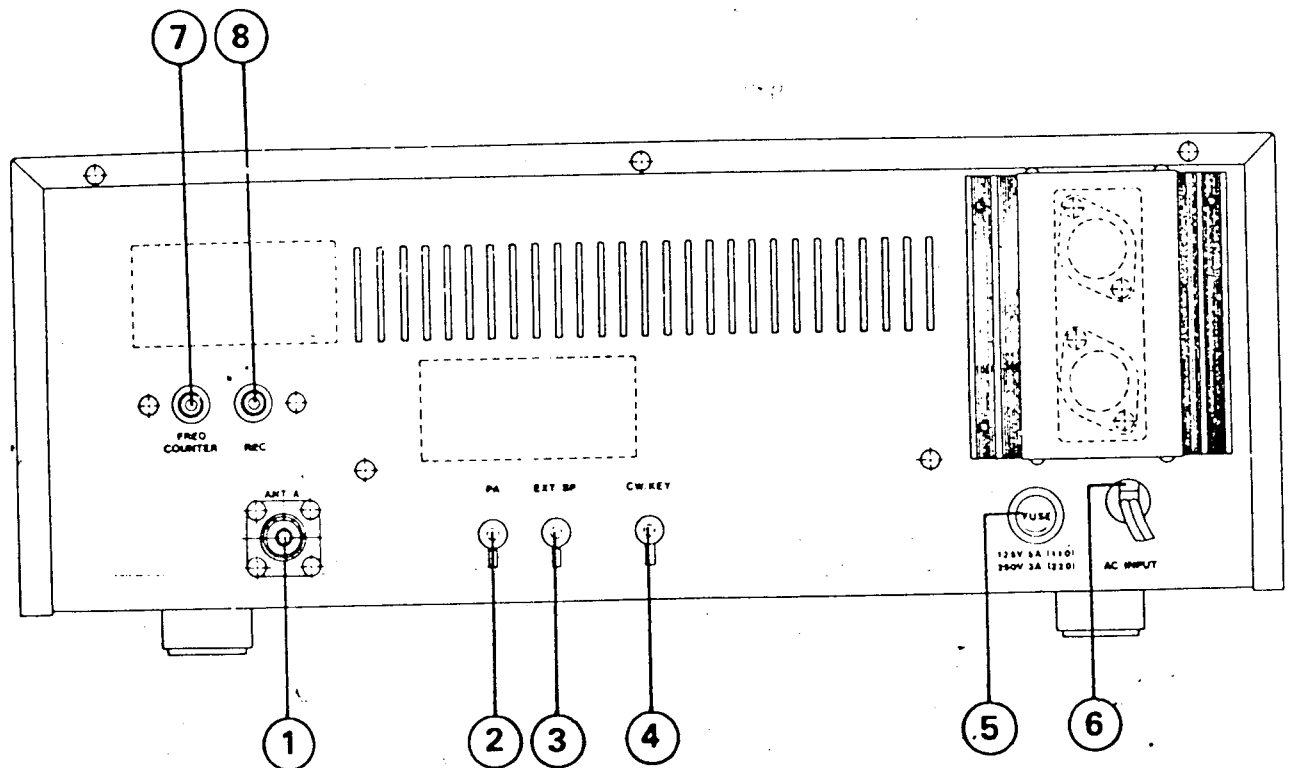
24. PA Switch (PULL)

This switch selects the public address mode of the transceiver. The PA function should not be used unless an external speaker is connected to the PA SP jack on the rear panel. See the Public Address Operation on page 6.

25. Frequency Counter

The frequency counter indicates of the selected channel you wish to operate on.

Rear Panel



Rear Panel Connectors

1. Antenna

Accepts 50 ohm coaxial cable with a type PL-259 plug to be connected.

2. **PA Speaker Jack**

Used for public address operation. The PA speaker should be connected to this jack using 1/8" (3.6mm) diameter plug. Insertion of an external speaker into the External Speaker jack will not interrupt the PA operation.

3. **External Speaker Jack**

Used to connect an external speaker for extra sound source. Use 1/8" (3.6mm) diameter plug for connection. Insertion of the plug into this jack will silence the internal speaker.

4. **CW Key**

Use for morse code operation. Connect a CW key to this jack and place the CW/FM/AM/USB/LSB switch in the CW position.

5. **Fuse**

Accommodates a fuse for AC input circuit protection. Use 125V 5A or 250V 3A fuse for replacement.

Note: Before replacing the fuse, see your dealer to check to find out the reason why the fuse was blown. Replacing without check may only blow the fuse again.

6. **AC Power Cord**

Connects to AC power outlet for AC mains supply.

7. **Frequency Counter Output Jack**

The RCA-type (pin) jack is used to connect an optional frequency counter so that you can watch channel frequency digitally. The frequency counter readout will be possible on transmitting only.

8. **Recording Output Jack**

The RCA-type (pin) jack provides output for connection to a tape recorder to permit recording of received signals or your modulating voice.

Operating Procedure To Receive

IMPORTANT: Make sure that the antenna, power source, and microphone are connected before you operate.

- 1) Set the ECHO switch to OFF position.
- 2) Turn the unit on by setting the Power Switch to On position. Now the meters, Channel Indicator, and Function Indicators will be illuminated.
- 3) Temporarily, set the Mode Switch in AM position.
- 4) Set the Squelch Control in fully counterclockwise position and adjust the AF Gain control for a comfortable listening level.
- 5) Listen to the background noise from the speaker. Turn the Squelch Control slowly clockwise until the noise just disappears (no signal should be present). Leave the Squelch Control at this setting. The Squelch Control is now properly adjusted. The receiver will remain quiet until a signal is actually received. Do not advance the Squelch Control too far clockwise or some of the weaker signals will not be heard.
- 6) Depress the Coarse and set it to the center (12 o'clock) position.
- 7) Select a desired mode of operation, CW, FM, AM, USB or LSB and adjust the Clarifier.
- 8) Select a channel you desire by the Band Select switch, then by the Channel Selector.

Operating Procedure To Transmit

- 1) Select the desired channel and mode of transmission.
- 2) If the channel is clear, depress the Push-to-Talk switch on the microphone. Speak in a normal tone of voice.

Standby-Beep

A special provision has been built in your radio to give other stations a sign which tells that you are turning to receive. Without needing switching operation to activate this feature, a beep tone is automatically transmitted at each time you release the push-to-talk switch on the microphone to turn to receive mode.

Microphone gain control

A preamplifier circuit is built into the radio to increase the microphone gain. Experiment with the control for setting that will best suit your individual use.

Note: When the microphone gain control is set to maximum, ambient noise

may also be picked up by the microphone. In high noise situations, low microphone gain setting may produce the best results.

The microphone gain control is also used to adjust PA loudness.

Public Address Operation

To use this feature of the transceiver, a speaker having a voice coil impedance of 8 to 16 ohms and a power handling capability of at least 3 watts should be connected to the PA SP jack on the rear panel. Be sure that there is physical separation between the microphone and the PA speaker itself. If the PA speaker is located very close to the microphone, acoustic feedback will result when the PA amplifier is operated at high volume (or when PA is used indoors). Adjustment of PA volume is made with the MIC GAIN control.

SWR Measurement

Most antennas are factory tuned, but the antenna efficiency may be peaked by slightly adjusting the length of antenna using the SWR meter built into the unit. This adjustment may improve the antenna standing wave ratio (SWR). The SWR permits you to determine how well matched the antenna and its cables are to your transceiver.

- 1) Set the unit in the receive mode as instructed under the Operating Procedure to Receive section.
- 2) Set the Mode switch to AM position; the SWR-Cal 6 switch to the Cal position.
- 3) Press the Push-to-Talk switch on the microphone and turn the Calibrate Control clockwise (past click) so that the SWR meter pointer exactly coincides with the Set mark on the scale. Release the Push-to-Talk switch.
- 4) Set the SWR-Cal switch to the SWR position and depress the Push-to-Talk switch again. The SWR of your antenna is read directly on the scale.

Note: An SWR below 2 or less is desired as this indicates that over 95% of the transmitted power is broadcast into the air.

ALTERNATE MICROPHONES AND INSTALLATION

For best results, the user should select a low-impedance dynamic type microphone or a transistorized microphone. Transistorized type microphones have a low output impedance characteristic. The microphones must be provided with a four-lead cable. The audio conductor and its shielded lead comprise two of the leads. The fourth lead is for receive control, and third is for transmit control. The microphone should provide the functions shown in schematic below.

4 WIRE MIC CABLE

Pin Number	Mic Cable Lead
1	Audio Shield
2	Audio Lead
3	Transmit Control
4	Receive Control

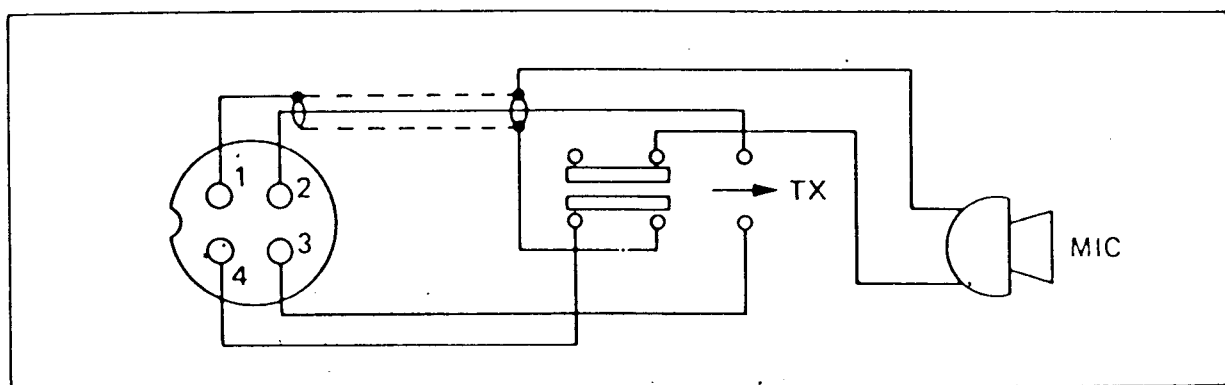


Fig. 3. Your transceiver microphone schematic.

If the microphone to be used is provided with pre-cut leads, they must be revised as follows.

1. Cut leads so that they extend $7/16$ " beyond the plastic insulating jacket of the microphone cable.
2. All leads should be cut to the same length. Strip the ends of each wire $1/8$ " and tin the exposed wire.

Before beginning the actual wiring read carefully, the circuit and wiring information provided with the microphone you select. Use the minimum head required in soldering the connections. Keep the exposed wire lengths to a minimum to avoid shorting when the microphone plug is reassembled.

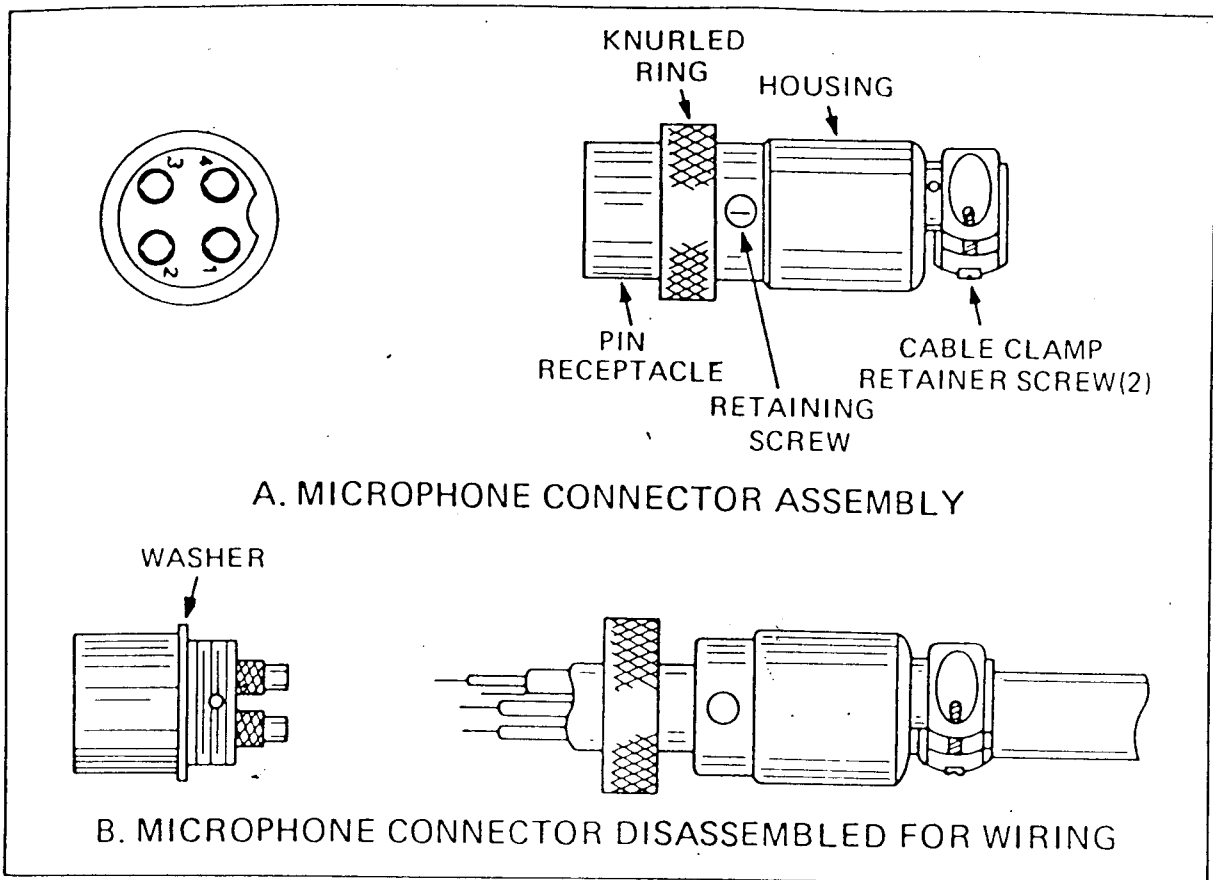


Fig. 4. Microphone plug wiring.

1. Remove the retaining screw.
2. Unscrew the housing from the pin receptacle body.
3. Loosen the two cable clamp retainer screws.
4. Feed the microphone cable through the housing, knurled ring and washer as shown Fig. 4.
5. The wires must now be soldered to the pins as indicated in the above wiring tables. If a vise or clamping tool is available it should be used to hold the pin receptacle body during the soldering operation, so that both hands are free to perform the soldering. If a vise or clamping tool is not available, the pin receptacle body can be held in a stationary position by inserting it into the microphone jack of the front panel. The numbers of the pins of the microphone plug are shown in Fig. 5, as viewed from the back of the plug. Before soldering the wire to the pins, pre-tin the wire receptacle of each pin of the plug.

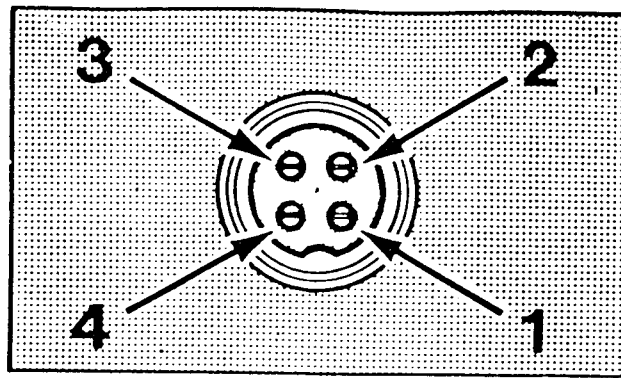


Fig. 5. Microphone plug pin numbers viewed from rear of pin receptacle.

Be sure that the housing and the knurled ring of Fig. 3 are pushed back onto the microphone cable before starting to solder. If the washer is not captive to the pin receptacle body, make sure that it is placed on the threaded portion of the pin receptacle body before soldering.

If the microphone jack is used to hold the pin receptacle during the soldering operation, best results are obtained when the connections to pins 1 and 3 are made first and then the connections to pins 2 and 4. Use a minimum amount of solder and be careful to prevent excessive solder accumulation on pins, which could cause a short between the pin and the microphone plug housing.

6. When all soldering connections to the pins of the microphone plug are complete, push the knurled ring and the housing forward and screw the housing onto the threaded portion of the pin receptacle body. Note the location of the screw clearance hole in the plug housing with respect to the threaded hole in the pin receptacle body. When the housing is completely threaded into the pin receptacle body, a final fraction of a turn either clockwise or counterclockwise may be required to align the screw hole with the threaded hole in the pin receptacle body. When these are aligned, the retaining screw is then screwed into the place to secure the housing to the pin receptacle body.
7. The two cable clamp retainer screws should now be tightened to secure the housing to the microphone cord. If the cutting directions have been carefully followed, the cable clamp should secure to the insulating jacket of the microphone cable.
8. Upon completion of the microphone plug wiring, connect and secure the microphone plug in the transceiver.

A FEW RULES THAT SHOULD BE OBEYED

1. You must identify your official licensed call sign at the beginning and end of every conversation.
2. You are not allowed to carry on a conversation with another station for more than five minutes at a time without taking a one-minute break, to give others a chance to use the channel.
3. You are not allowed to blast others off the air by over-powering them with illegally amplified transmitter power, or illegally high antennas.
4. You can't use CB to promote illegal activities.
5. You are not allowed to use profanity.
6. You may not play music in your CB.
7. You may not use your CB to sell merchandise or professional services.

(H)

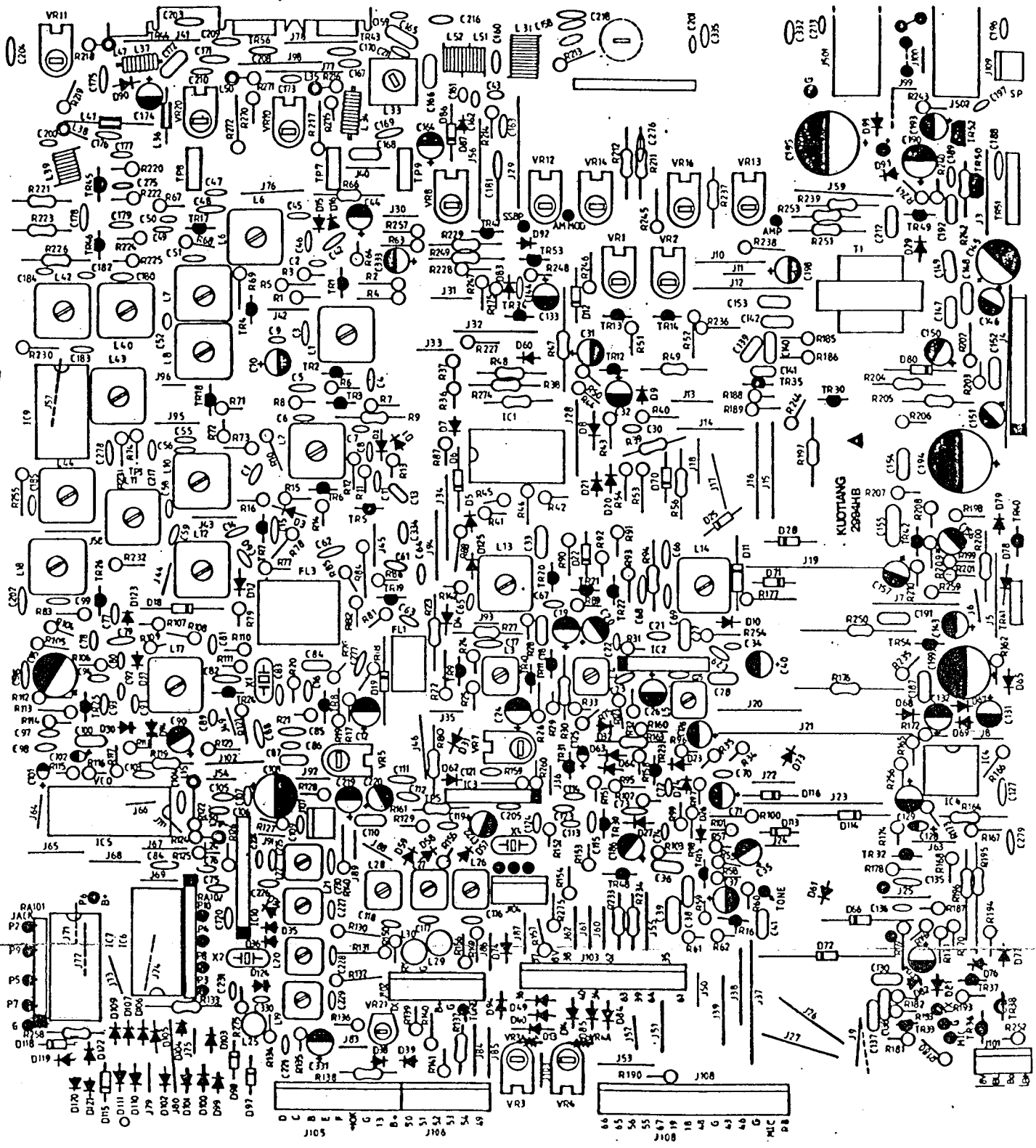
CHANNEL INFORMATION

Chan nel	ANT FREQUENCY (MHz)											
	A BAND		B BAND		C BAND		D BAND		E BAND		F BAND	
	Nor mal	+10 KHz	Nor mal	+10 KHz	Nor mal	+10 KHz	Nor mal	+10 KHz	Nor mal	+10 KHz	Nor mal	+10 KHz
1	26.065	26.075	26.515	26.525	26.965	26.975	27.415	27.425	27.865	27.875	28.315	28.325
2	26.075	26.085	26.525	26.535	26.975	26.985	27.425	27.435	27.875	27.885	28.325	28.335
3	26.085	26.095	26.535	26.545	26.985	26.995	27.435	27.445	27.885	27.895	28.335	28.355
		(3A)		(3A)		(3A)		(3A)		(3A)	(3A)	(3A)
4	26.105	26.115	26.555	26.565	27.005	27.015	27.455	27.465	27.905	27.915	28.355	28.365
5	26.115	26.125	26.565	26.575	27.015	27.025	27.465	27.475	27.915	27.925	28.365	28.375
6	26.125	26.135	26.575	26.585	27.025	27.035	27.475	27.485	27.925	27.935	28.375	28.385
7	26.135	26.145	26.585	26.595	27.035	27.045	27.485	27.495	27.935	27.945	28.385	28.405
		(7A)		(7A)		(7A)		(7A)		(7A)	(7A)	(7A)
8	26.155	26.165	26.605	26.615	27.055	27.065	27.505	27.515	27.955	27.965	28.405	28.415
9	26.165	26.175	26.615	26.625	27.065	27.075	27.515	27.525	27.965	27.975	28.415	28.425
10	26.175	26.185	26.625	26.635	27.075	27.085	27.525	27.535	27.975	27.985	28.425	28.435
11	26.185	26.195	26.635	26.645	27.085	27.095	27.535	27.545	27.985	27.995	28.435	28.455
		(11A)		(11A)		(11A)		(11A)		(11A)	(11A)	(11A)
12	26.205	26.215	26.655	26.665	27.105	27.115	27.555	27.565	28.005	28.015	28.455	28.465
13	26.215	26.225	26.665	26.675	27.115	27.125	27.565	27.575	28.015	28.025	28.465	28.475
14	26.225	26.235	26.675	26.685	27.125	27.135	27.575	27.585	28.025	28.035	28.475	28.485
15	26.235	26.245	26.685	26.695	27.135	27.145	27.585	27.595	28.035	28.045	28.485	28.505
		(15A)		(15A)		(15A)		(15A)		(15A)	(15A)	(15A)
16	26.255	26.265	26.705	26.715	27.155	27.165	27.605	27.615	28.055	28.065	28.505	28.515
17	26.265	26.275	26.715	26.725	27.165	27.175	27.615	27.625	28.065	28.075	28.515	28.525
18	26.275	26.285	26.725	26.735	27.175	27.185	27.625	27.635	28.075	28.085	28.525	28.535
19	26.285	26.295	26.735	26.745	27.185	27.195	27.635	27.645	28.085	28.095	28.535	28.555
		(19A)		(19A)		(19A)		(19A)		(19A)	(19A)	(19A)
20	26.305	26.315	26.755	26.765	27.205	27.215	27.655	27.665	28.105	28.115	28.555	28.565
21	26.315	26.325	26.765	26.775	27.215	27.225	27.665	27.675	28.115	28.125	28.565	28.575
22	26.325	26.335	26.775	26.785	27.225	27.235	27.675	27.685	28.125	28.135	28.575	28.605
23	26.355	26.365	26.805	26.815	27.255	27.265	27.705	27.715	28.155	28.165	28.605	28.585
24	26.335	26.345	26.785	26.795	27.235	27.245	27.685	27.695	28.135	28.145	28.585	28.595
25	26.345	26.355	26.795	26.805	27.245	27.255	27.695	27.705	28.145	28.155	28.595	28.615
26	26.365	26.375	26.815	26.825	27.265	27.275	27.715	27.725	28.165	28.175	28.615	28.625
27	26.375	26.385	26.825	26.835	27.275	27.285	27.725	27.735	28.175	28.185	28.625	28.635
28	26.385	26.395	26.835	26.845	27.285	27.295	27.735	27.745	28.185	28.195	28.635	28.645
29	26.395	26.405	26.845	26.855	27.295	27.305	27.745	27.755	28.195	28.205	28.645	28.655
30	26.405	26.415	26.855	26.865	27.305	27.315	27.755	27.765	28.205	28.215	28.655	28.665
31	26.415	26.425	26.865	26.875	27.315	27.325	27.765	27.775	28.215	28.225	28.665	28.675
32	26.425	26.435	26.875	26.885	27.325	27.335	27.775	27.785	28.225	28.235	28.675	28.685
33	26.435	26.445	26.885	26.895	27.335	27.345	27.785	27.795	28.235	28.245	28.685	28.695
34	26.445	26.455	26.895	26.905	27.345	27.355	27.795	27.805	28.245	28.255	28.695	28.705
35	26.455	26.465	26.905	26.915	27.355	27.365	27.805	27.815	28.255	28.265	28.705	28.715
36	26.465	26.475	26.915	26.925	27.365	27.375	27.815	27.825	28.265	28.275	28.715	28.725
37	26.475	26.485	26.925	26.935	27.375	27.385	27.825	27.835	28.275	28.285	28.725	28.735
38	26.485	26.495	26.935	26.945	27.385	27.395	27.835	27.845	28.285	28.295	28.735	28.745
39	26.495	26.505	26.945	26.955	27.395	27.405	27.845	27.855	28.295	28.305	28.745	28.755
40	26.505	26.515	26.955	26.965	27.405	27.415	27.855	27.865	28.305	28.315	28.755	28.765

(L)

CHANNEL INFORMATION

Chan nel	ANT FREQUENCY (MHz)											
	A BAND		B BAND		C BAND		D BAND		E BAND		F BAND	
	Nor mal	+10 KHz	Nor mal	+10 KHz	Nor mal	+10 KHz	Nor mal	+10 KHz	Nor mal	+10 KHz	Nor mal	+10 KHz
1	25.615	25.625	26.065	26.075	26.515	26.525	26.965	26.975	27.415	27.425	27.865	27.875
2	25.625	25.635	26.075	26.085	26.525	26.535	26.975	26.985	27.425	27.435	27.875	27.885
3	25.635	25.645	26.085	26.095	26.535	26.545	26.985	26.995	27.435	27.445	27.885	27.895
		(3A)		(3A)		(3A)		(3A)		(3A)		(3A)
4	25.655	25.665	26.105	26.115	26.555	26.565	27.005	27.015	27.455	27.465	27.905	27.915
5	25.665	25.675	26.115	26.125	26.565	26.575	27.015	27.025	27.465	27.475	27.915	27.925
6	25.675	25.685	26.125	26.135	26.575	26.585	27.025	27.035	27.475	27.485	27.925	27.935
7	25.685	25.695	26.135	26.145	26.585	26.595	27.035	27.045	27.485	27.495	27.935	27.945
		(7A)		(7A)		(7A)		(7A)		(7A)		(7A)
8	25.705	25.715	26.155	26.165	26.605	26.615	27.055	27.065	27.505	27.515	27.955	27.965
9	25.715	25.725	26.165	26.175	26.615	26.625	27.065	27.075	27.515	27.525	27.965	27.975
10	25.725	25.735	26.175	26.185	26.625	26.635	27.075	27.085	27.525	27.535	27.975	27.985
11	25.735	25.745	26.185	26.195	26.635	26.645	27.085	27.095	27.535	27.545	27.985	27.995
		(11A)		(11A)		(11A)		(11A)		(11A)		(11A)
12	25.755	25.765	26.205	26.215	26.655	26.665	27.105	27.115	27.555	27.565	28.005	28.015
13	25.765	25.775	26.215	26.225	26.665	26.675	27.115	27.125	27.565	27.575	28.015	28.025
14	25.775	25.785	26.225	26.235	26.675	26.685	27.125	27.135	27.575	27.585	28.025	28.035
15	25.785	25.795	26.235	26.245	26.685	26.695	27.135	27.145	27.585	27.595	28.035	28.045
		(15A)		(15A)		(15A)		(15A)		(15A)		(15A)
16	25.805	25.815	26.255	26.265	26.705	26.715	27.155	27.165	27.605	27.615	28.055	28.065
17	25.815	25.825	26.265	26.275	26.715	26.725	27.165	27.175	27.615	27.625	28.065	28.075
18	25.825	25.835	26.275	26.285	26.725	26.735	27.175	27.185	27.625	27.635	28.075	28.085
19	25.835	25.845	26.285	26.295	26.735	26.745	27.185	27.195	27.635	27.645	28.085	28.095
		(19A)		(19A)		(19A)		(19A)		(19A)		(19A)
20	25.855	25.865	26.305	26.315	26.755	26.765	27.205	27.215	27.655	27.665	28.105	28.115
21	25.865	25.875	26.315	26.325	26.765	26.775	27.215	27.225	27.665	27.675	28.115	28.125
22	25.875	25.885	26.325	26.335	26.775	26.785	27.225	27.235	27.675	27.685	28.125	28.135
23	25.905	25.915	26.355	26.365	26.805	26.815	27.255	27.265	27.705	27.715	28.155	28.165
24	25.885	25.895	26.335	26.345	26.785	26.795	27.235	27.245	27.685	27.695	28.135	28.145
25	25.895	25.905	26.345	26.355	26.795	26.805	27.245	27.255	27.695	27.705	28.145	28.155
26	25.915	25.925	26.365	26.375	26.815	26.825	27.265	27.275	27.715	27.725	28.165	28.175
		25.925	26.375	26.385	26.825	26.835	27.275	27.285	27.725	27.735	28.175	28.185
28	25.935	25.945	26.385	26.395	26.835	26.845	27.285	27.295	27.735	27.745	28.185	28.195
29	25.945	25.955	26.395	26.405	26.845	26.855	27.295	27.305	27.745	27.755	28.195	28.205
30	25.955	25.965	26.405	26.415	26.855	26.865	27.305	27.315	27.755	27.765	28.205	28.215
31	25.965	25.975	26.415	26.425	26.865	26.875	27.315	27.325	27.765	27.775	28.215	28.225
32	25.975	25.985	26.425	26.435	26.875	26.885	27.325	27.335	27.775	27.785	28.225	28.235
33	25.985	25.995	26.435	26.445	26.885	26.895	27.335	27.345	27.785	27.795	28.235	28.245
34	25.995	26.005	26.445	26.455	26.895	26.905	27.345	27.355	27.795	27.805	28.245	28.255
35	26.005	26.015	26.455	26.465	26.905	26.915	27.355	27.365	27.805	27.815	28.255	28.265
36	36.015	26.025	26.465	26.475	26.915	26.925	27.365	27.375	27.815	27.825	28.265	28.275
37	26.025	26.035	26.475	26.485	26.925	26.935	27.375	27.385	27.825	27.835	28.275	28.285
38	26.035	26.045	26.485	26.495	26.935	26.945	27.385	27.395	27.835	27.845	28.285	28.295
39	26.045	26.055	26.495	26.505	26.945	26.955	27.395	27.405	27.845	27.855	28.295	28.305
40	26.055	26.065	26.505	26.515	26.955	26.965	27.405	27.415	27.855	27.865	28.305	28.315



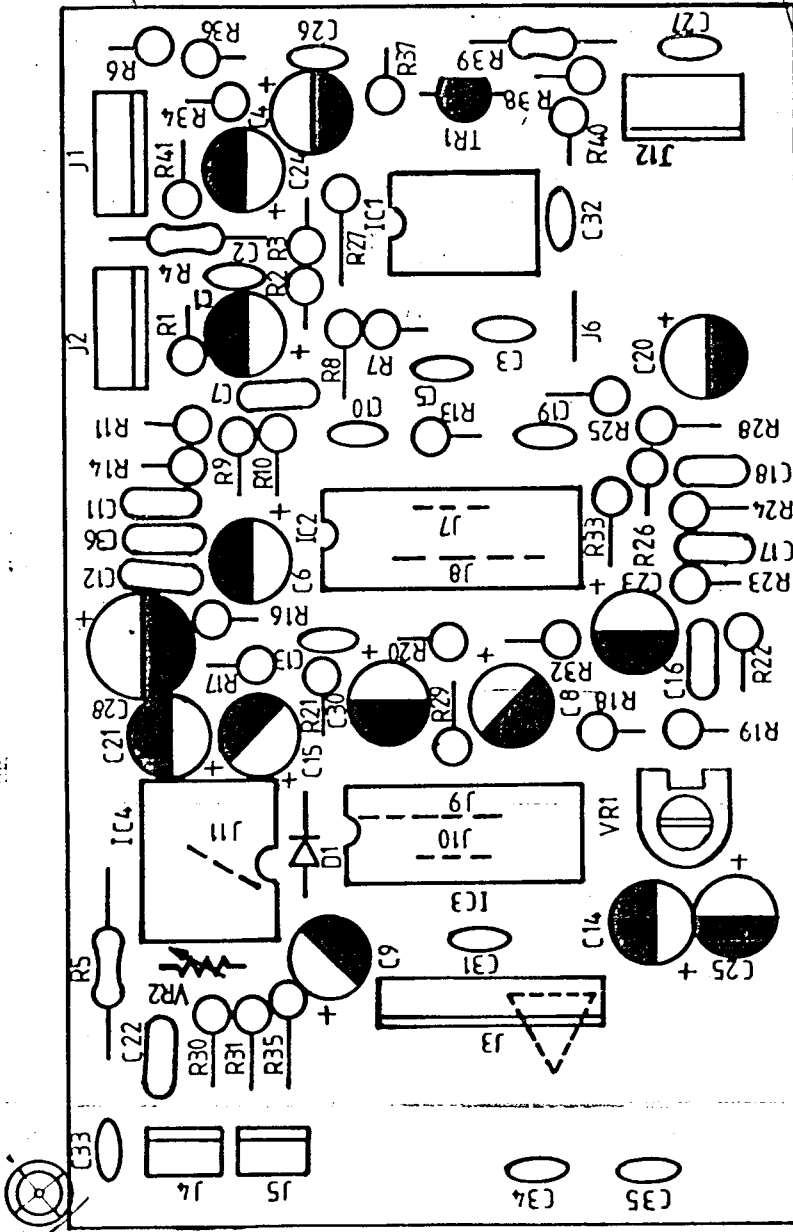
KLUOTIANG
2994HB

JACK
P2
P9
P5
P7
6
D10
D11
D12
D13
D14
D15
D16
D17
D18
D19
D20
D21
D22
D23
D24
D25
D26
D27
D28
D29
D30
D31
D32
D33
D34
D35
D36
D37
D38
D39
D40
D41
D42
D43
D44
D45
D46
D47
D48
D49
D50
D51
D52
D53
D54
D55
D56
D57
D58
D59
D60
D61
D62
D63
D64
D65
D66
D67
D68
D69
D70
D71
D72
D73
D74
D75
D76
D77
D78
D79
D80
D81
D82
D83
D84
D85
D86
D87
D88
D89
D90
D91
D92
D93
D94
D95
D96
D97
D98
D99
D100
D101
D102
D103
D104
D105
D106
D107
D108
D109
D110
D111
D112
D113
D114
D115
D116
D117
D118
D119
D120
D121
D122
D123
D124
D125
D126
D127
D128
D129
D130
D131
D132
D133
D134
D135
D136
D137
D138
D139
D140
D141
D142
D143
D144
D145
D146
D147
D148
D149
D150
D151
D152
D153
D154
D155
D156
D157
D158
D159
D160
D161
D162
D163
D164
D165
D166
D167
D168
D169
D170
D171
D172
D173
D174
D175
D176
D177
D178
D179
D180
D181
D182
D183
D184
D185
D186
D187
D188
D189
D190
D191
D192
D193
D194
D195
D196
D197
D198
D199
D200
D201
D202
D203
D204
D205
D206
D207
D208
D209
D210
D211
D212
D213
D214
D215
D216
D217
D218
D219
D220
D221
D222
D223
D224
D225
D226
D227
D228
D229
D230
D231
D232
D233
D234
D235
D236
D237
D238
D239
D240
D241
D242
D243
D244
D245
D246
D247
D248
D249
D250
D251
D252
D253
D254
D255
D256
D257
D258
D259
D260
D261
D262
D263
D264
D265
D266
D267
D268
D269
D270
D271
D272
D273
D274
D275
D276
D277
D278
D279
D280
D281
D282
D283
D284
D285
D286
D287
D288
D289
D290
D291
D292
D293
D294
D295
D296
D297
D298
D299
D300
D301
D302
D303
D304
D305
D306
D307
D308
D309
D310
D311
D312
D313
D314
D315
D316
D317
D318
D319
D320
D321
D322
D323
D324
D325
D326
D327
D328
D329
D330
D331
D332
D333
D334
D335
D336
D337
D338
D339
D340
D341
D342
D343
D344
D345
D346
D347
D348
D349
D350
D351
D352
D353
D354
D355
D356
D357
D358
D359
D360
D361
D362
D363
D364
D365
D366
D367
D368
D369
D370
D371
D372
D373
D374
D375
D376
D377
D378
D379
D380
D381
D382
D383
D384
D385
D386
D387
D388
D389
D390
D391
D392
D393
D394
D395
D396
D397
D398
D399
D400
D401
D402
D403
D404
D405
D406
D407
D408
D409
D410
D411
D412
D413
D414
D415
D416
D417
D418
D419
D420
D421
D422
D423
D424
D425
D426
D427
D428
D429
D430
D431
D432
D433
D434
D435
D436
D437
D438
D439
D440
D441
D442
D443
D444
D445
D446
D447
D448
D449
D450
D451
D452
D453
D454
D455
D456
D457
D458
D459
D460
D461
D462
D463
D464
D465
D466
D467
D468
D469
D470
D471
D472
D473
D474
D475
D476
D477
D478
D479
D480
D481
D482
D483
D484
D485
D486
D487
D488
D489
D490
D491
D492
D493
D494
D495
D496
D497
D498
D499
D500
D501
D502
D503
D504
D505
D506
D507
D508
D509
D510
D511
D512
D513
D514
D515
D516
D517
D518
D519
D520
D521
D522
D523
D524
D525
D526
D527
D528
D529
D530
D531
D532
D533
D534
D535
D536
D537
D538
D539
D540
D541
D542
D543
D544
D545
D546
D547
D548
D549
D550
D551
D552
D553
D554
D555
D556
D557
D558
D559
D560
D561
D562
D563
D564
D565
D566
D567
D568
D569
D570
D571
D572
D573
D574
D575
D576
D577
D578
D579
D580
D581
D582
D583
D584
D585
D586
D587
D588
D589
D590
D591
D592
D593
D594
D595
D596
D597
D598
D599
D600
D601
D602
D603
D604
D605
D606
D607
D608
D609
D610
D611
D612
D613
D614
D615
D616
D617
D618
D619
D620
D621
D622
D623
D624
D625
D626
D627
D628
D629
D630
D631
D632
D633
D634
D635
D636
D637
D638
D639
D640
D641
D642
D643
D644
D645
D646
D647
D648
D649
D650
D651
D652
D653
D654
D655
D656
D657
D658
D659
D660
D661
D662
D663
D664
D665
D666
D667
D668
D669
D670
D671
D672
D673
D674
D675
D676
D677
D678
D679
D680
D681
D682
D683
D684
D685
D686
D687
D688
D689
D690
D691
D692
D693
D694
D695
D696
D697
D698
D699
D700
D701
D702
D703
D704
D705
D706
D707
D708
D709
D710
D711
D712
D713
D714
D715
D716
D717
D718
D719
D720
D721
D722
D723
D724
D725
D726
D727
D728
D729
D730
D731
D732
D733
D734
D735
D736
D737
D738
D739
D740
D741
D742
D743
D744
D745
D746
D747
D748
D749
D750
D751
D752
D753
D754
D755
D756
D757
D758
D759
D760
D761
D762
D763
D764
D765
D766
D767
D768
D769
D770
D771
D772
D773
D774
D775
D776
D777
D778
D779
D780
D781
D782
D783
D784
D785
D786
D787
D788
D789
D790
D791
D792
D793
D794
D795
D796
D797
D798
D799
D800
D801
D802
D803
D804
D805
D806
D807
D808
D809
D810
D811
D812
D813
D814
D815
D816
D817
D818
D819
D820
D821
D822
D823
D824
D825
D826
D827
D828
D829
D830
D831
D832
D833
D834
D835
D836
D837
D838
D839
D840
D841
D842
D843
D844
D845
D846
D847
D848
D849
D850
D851
D852
D853
D854
D855
D856
D857
D858
D859
D860
D861
D862
D863
D864
D865
D866
D867
D868
D869
D870
D871
D872
D873
D874
D875
D876
D877
D878
D879
D880
D881
D882
D883
D884
D885
D886
D887
D888
D889
D890
D891
D892
D893
D894
D895
D896
D897
D898
D899
D900
D901
D902
D903
D904
D905
D906
D907
D908
D909
D910
D911
D912
D913
D914
D915
D916
D917
D918
D919
D920
D921
D922
D923
D924
D925
D926
D927
D928
D929
D930
D931
D932
D933
D934
D935
D936
D937
D938
D939
D940
D941
D942
D943
D944
D945
D946
D947
D948
D949
D950
D951
D952
D953
D954
D955
D956
D957
D958
D959
D960
D961
D962
D963
D964
D965
D966
D967
D968
D969
D970
D971
D972
D973
D974
D975
D976
D977
D978
D979
D980
D981
D982
D983
D984
D985
D986
D987
D988
D989
D990
D991
D992
D993
D994
D995
D996
D997
D998
D999
D1000

D C B E F G H J K L M N O P Q R S T U V W X Y Z
105
106
107
108
109
110
111
112
113
114
115
116
117
118
119
120
121
122
123
124
125
126
127
128
129
130
131
132
133
134
135
136
137
138
139
140
141
142
143
144
145
146
147
148
149
150
151
152
153
154
155
156
157
158
159
160
161
162
163
164
165
166
167
168
169
170
171
172
173
174
175
176
177
178
179
180
181
182
183
184
185
186
187
188
189
190
191
192
193
194
195
196
197
198
199
200
201
202
203
204
205
206
207
208
209
210
211
212
213
214
215
216
217
218
219
220
221
222
223
224
225
226
227
228
229
230
231
232
233
234
235
236
237
238
239
240
241
242
243
244
245
246
247
248
249
250
251
252
253
254
255
256
257
258
259
260
261
262
263
264
265
266
267
268
269
270
271
272
273
274
275
276
277
278
279
280
281
282
283
284
285
286
287
288
289
290
291
292
293
294
295
296
297
298
299
300
301
302
303
304
305
306
307
308
309
310
311
312
313
314
315
316
317
318
319
320
321
322
323
324
325
326
327
328
329
330
331
332
333
334
335
336
337
338
339
340
341
342
343
344
345
346
347
348
349
350
351
352
353
354
355
356
357
358
359
360
361
362
363
364
365
366
367
368
369
370
371
372
373
374
375
376
377
378
379
380
381
382
383
384
385
386
387
388
389
390
391
392
393
394
395
396
397
398
399
400
401
402
403
404
405
406
407
408
409
410
411
412
413
414
415
416
417
418
419
420
421
422
423
424
425
426
427
428
429
430
431
432
433
434
435
436
437
438
439
440
441
442
443
444
445
446
447
448
449
450
451
452
453
454
455
456
457
458
459
460
461
462
463
464
465
466
467
468
469
470
471
472
473
474
475
476
477
478
479
480
481
482
483
484
485
486
487
488
489
490
491
492
493
494
495
496
497
498
499
500

66
65
64
63
62
61
60
59
58
57
56
55
54
53
52
51
50
49
48
47
46
45
44
43
42
41
40
39
38
37
36
35
34
33
32
31
30
29
28
27
26
25
24
23
22
21
20
19
18
17
16
15
14
13
12
11
10
9
8
7
6
5
4
3
2
1
0
M C
P B

4. DWG. NO: EPTOSSB50B E=1.2°
 DATE: 78.8.18
 5. HOLE SIZE: A=15X4°-3
 翻图: 吕淑贞



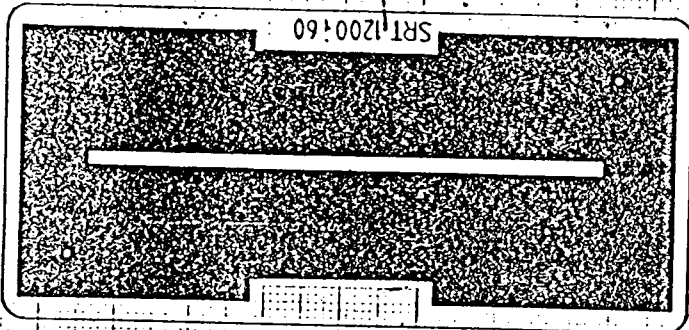
NOTES
 1 S=2:1
 2 MODEL: GALAXY PLUS
 3 TITLE: ECHO PCB
 4 DWG NO: EPTOSSB50B
 DATE: 78.9.7

DRAWER: 吕淑贞

SRT-1206

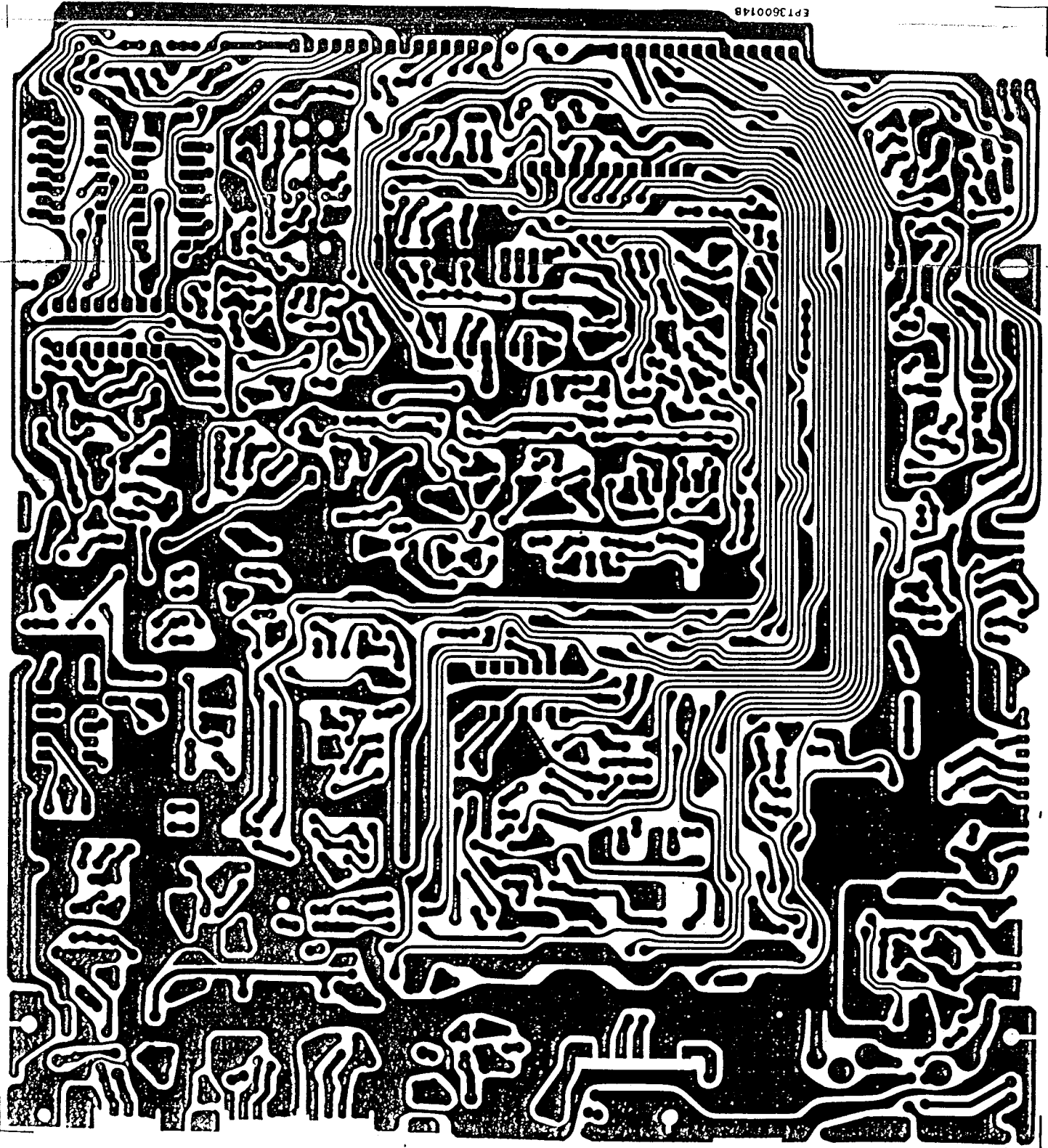
2:1

SRT 1200:60



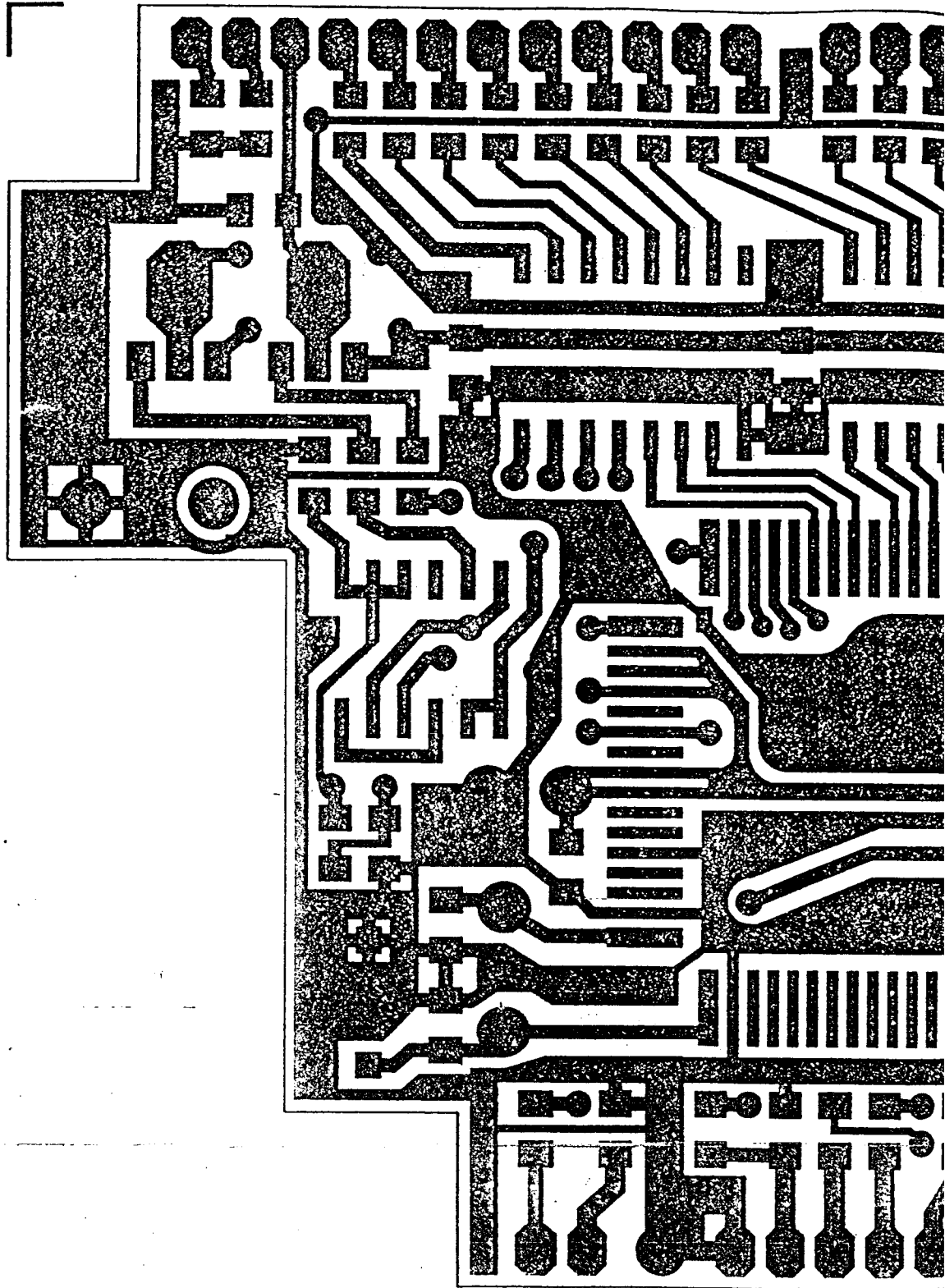
Handwritten marks or scribbles.

EP1360014B



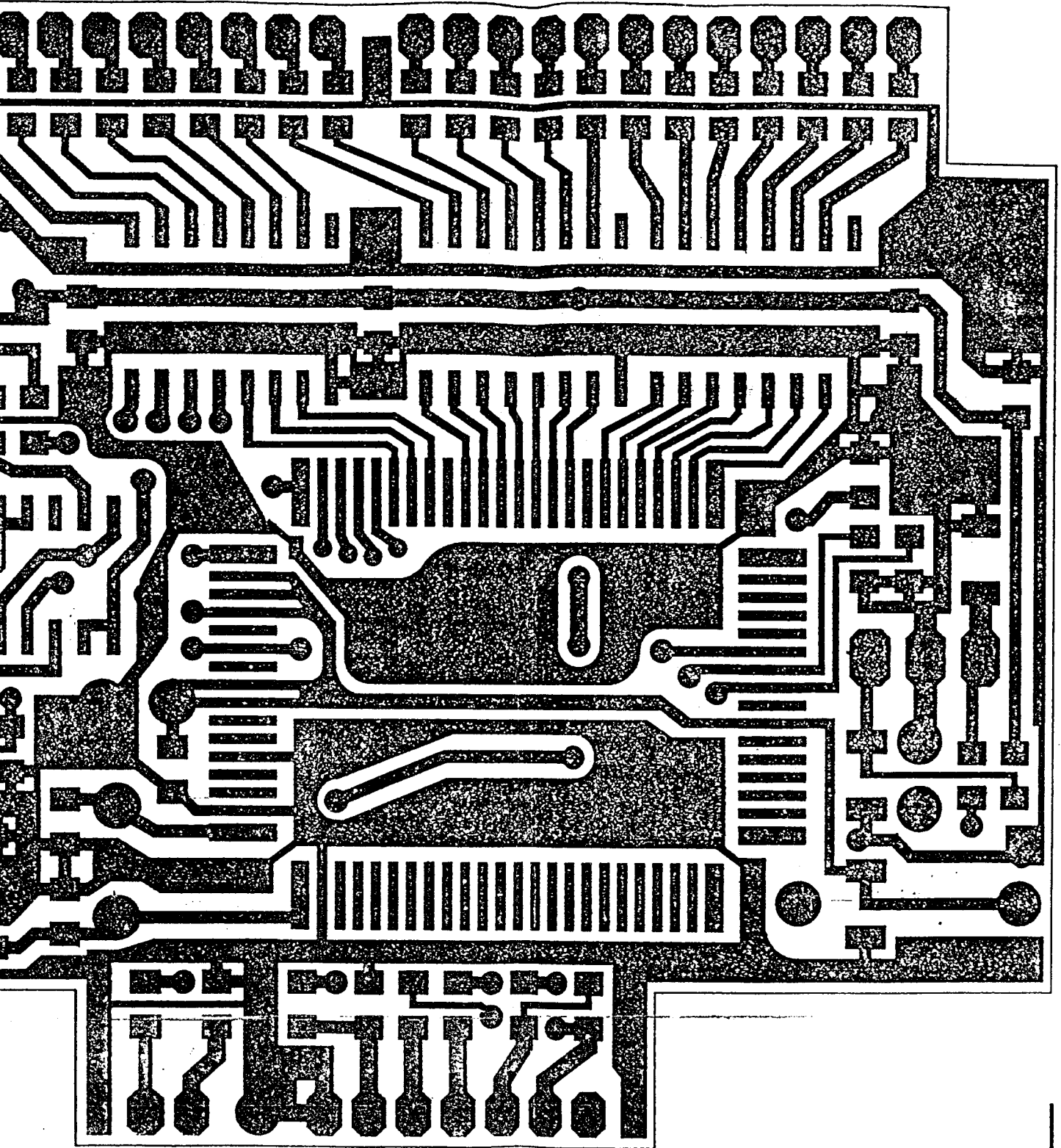
1A

1B



1B

1C



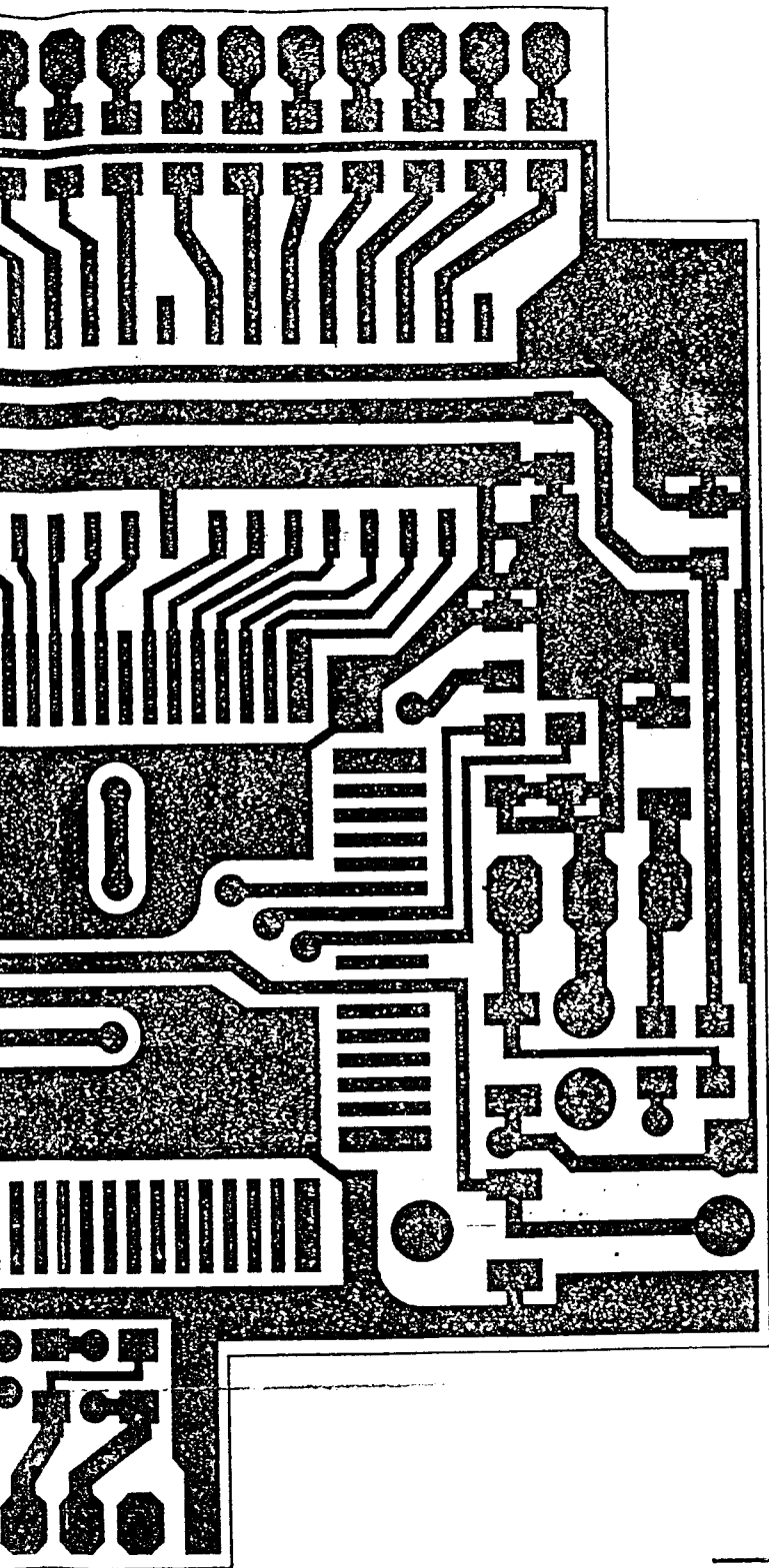
- NO
- 1: SC
- 2: MD
- 3: TI
- 4: DV
- 5: MA
- 6: HC

7: DR

此面为如

1C

1D



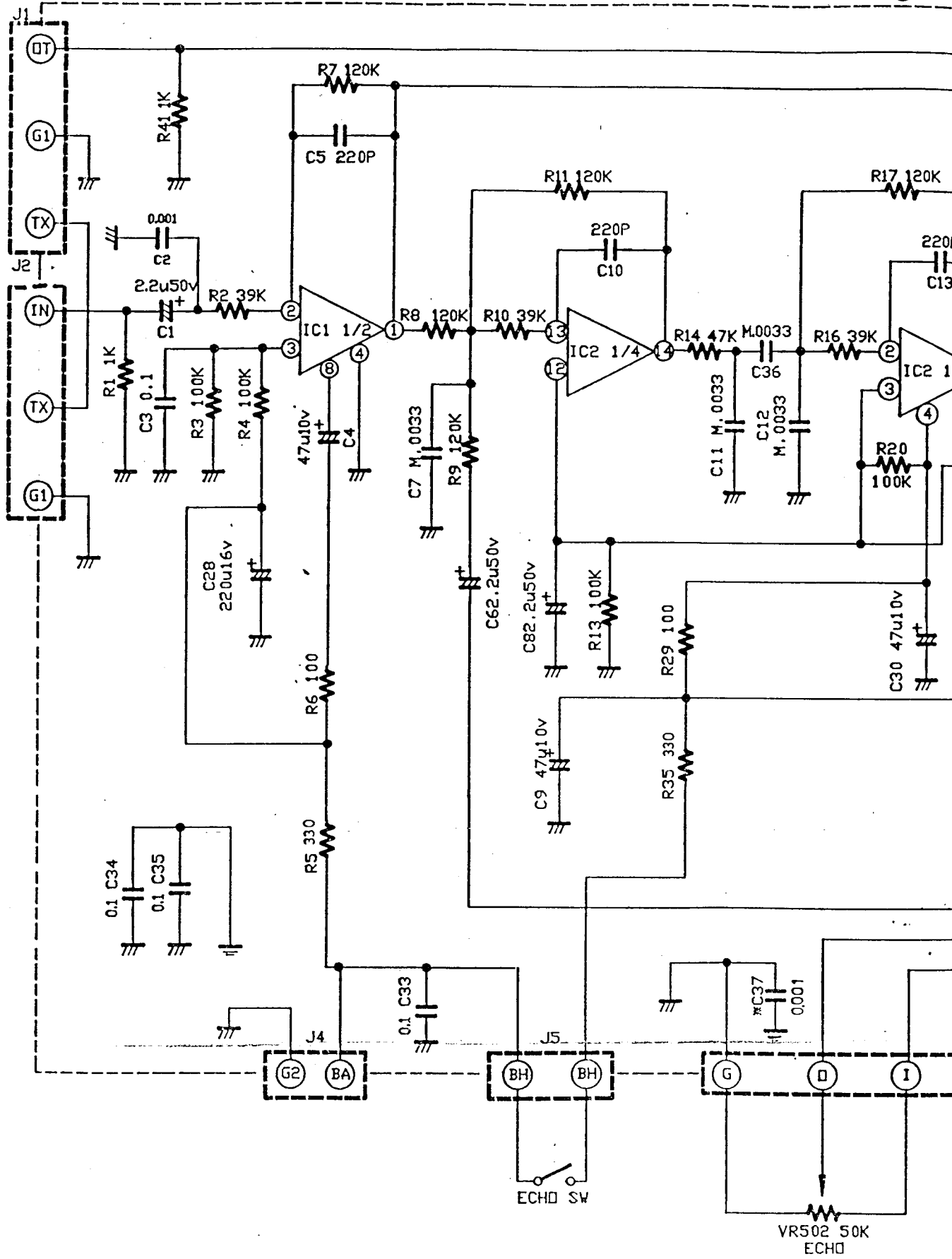
NOTES

- 1: SCALE: 4:1
- 2: MODEL: NEW COUNTER
- 3: TITLE: COUNTER PCB
- 4: DWG NO: EPT210011C
- 5: MATERIAL: F.G 1.6 mm
- 6: HOLE: A=1.5 ϕ B=1.0 ϕ
C=0.8 ϕ ØHTER 0.5 ϕ
- 7: DRAWING: RAY.10.1994



此面为铜箔面铜箔图
(正版)

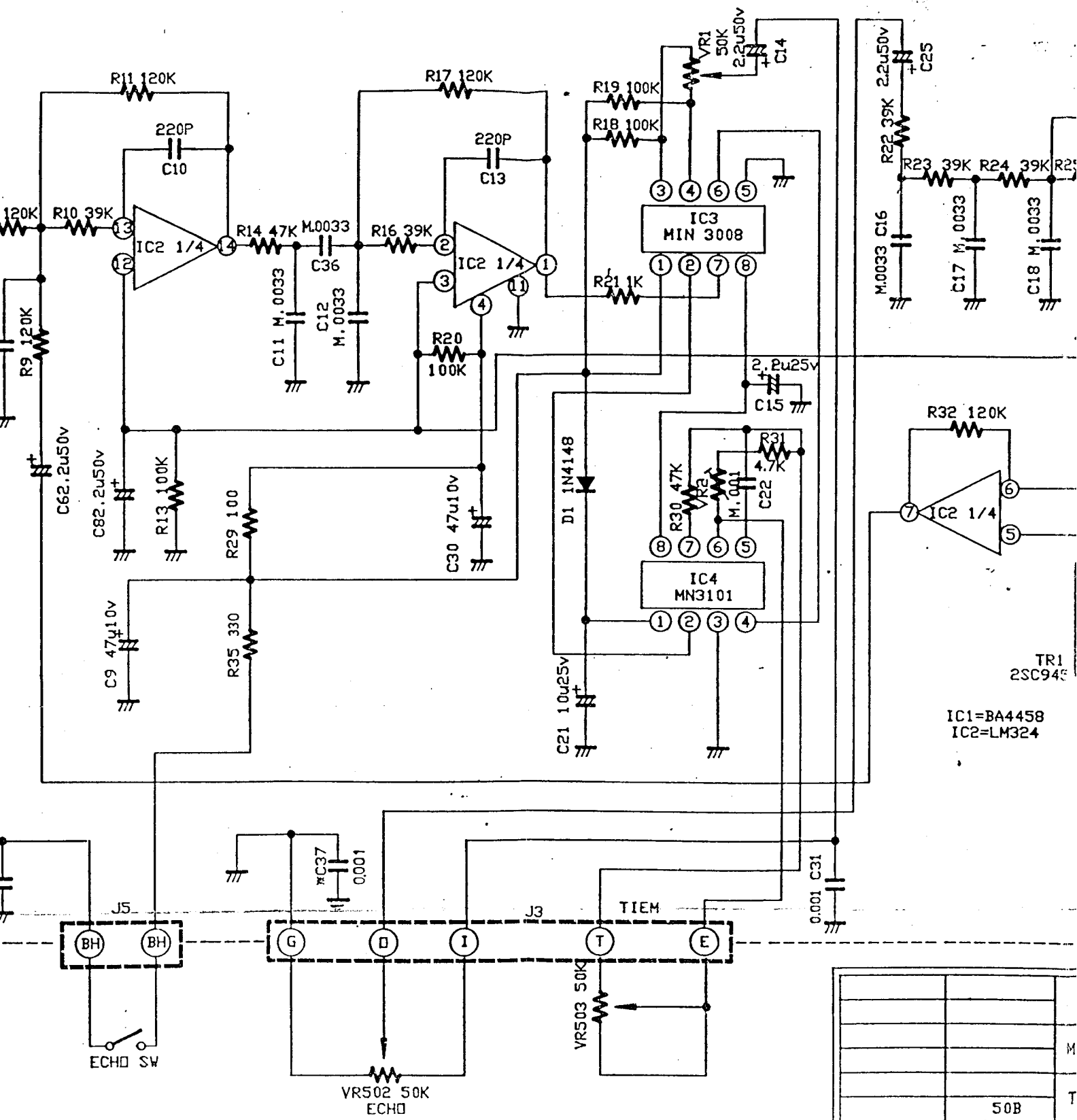
J.F.WEI



3	R5	100
2	R35	100
1	R34	1K
		CHANG

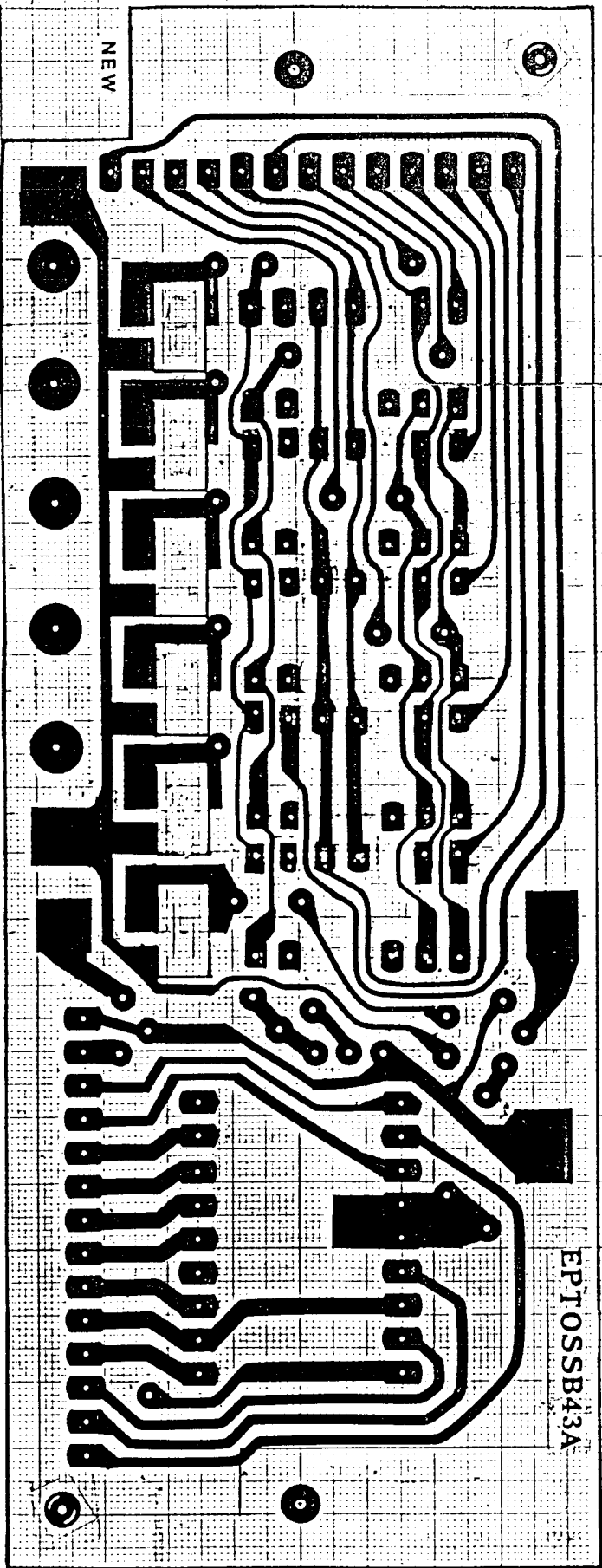
20

2C



3	R5	100	330	"	"
2	R35	100	330	"	"
1	R34	1K	330	79,10.5	2657
CHANGE ITEM				DATE	REMARK

APPROVED	CHECKED	50B	DR



NOTE:

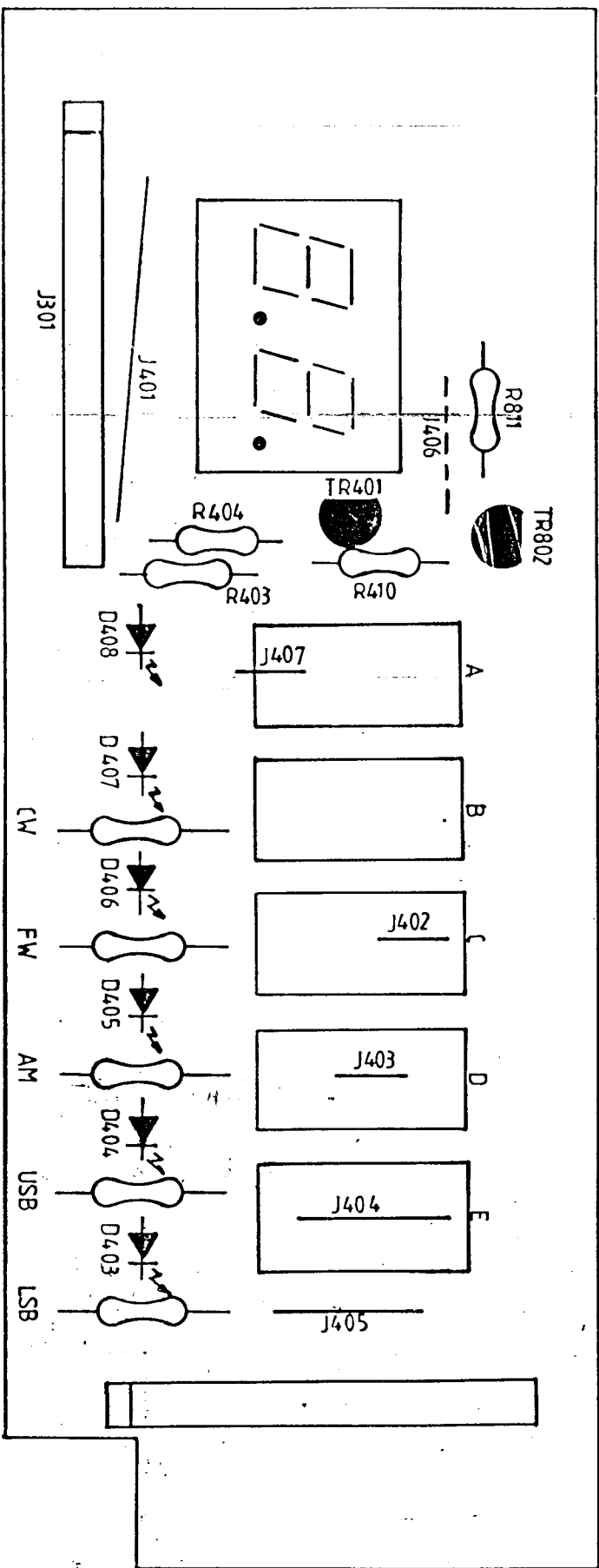
1. 板种 = GALAXY SATURN
2. 图号 = COUNTER PCB
3. 图号 = EPTOSSB43A

4. S = 2:1
5. 孔径:

A = 2.5 - 2
B = 1.2 - 1.2
C = 1

孔径 1.08

图号: 西字表 78.3.26



NOTES:

L.S.: 2:1

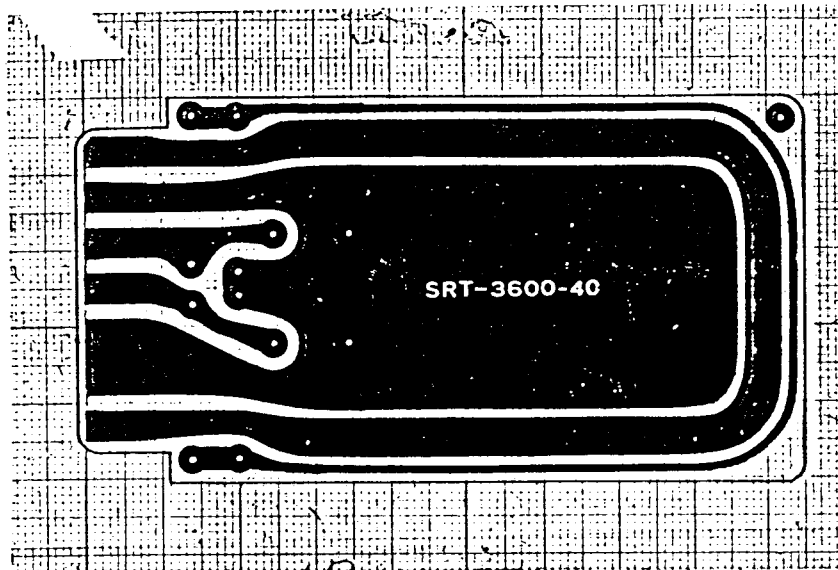
2 机种: GALAXY SATURN

1. 图名: COUNTER P.C.B

4 图号: ZPT055B42A

制图: 洪景莉

99.5.24



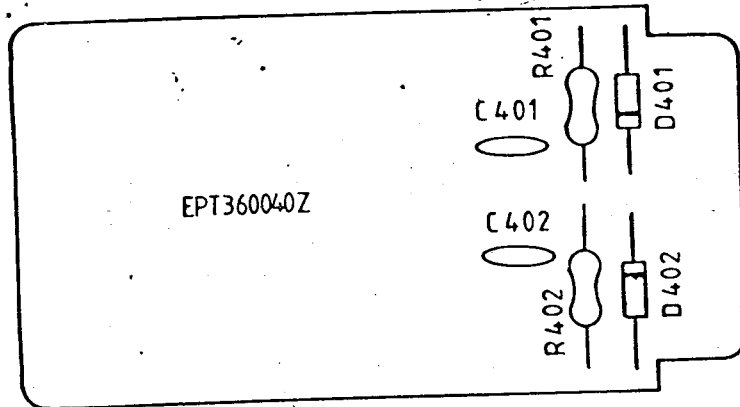
圖名: SWR

NOTE:

1. S: 2:1
2. 機種: SRC-3600
3. 圖號: SRC-3600-40
4. 孔徑: 0.8φ

製圖: 呂佩玲
公司: 程遠

SWR



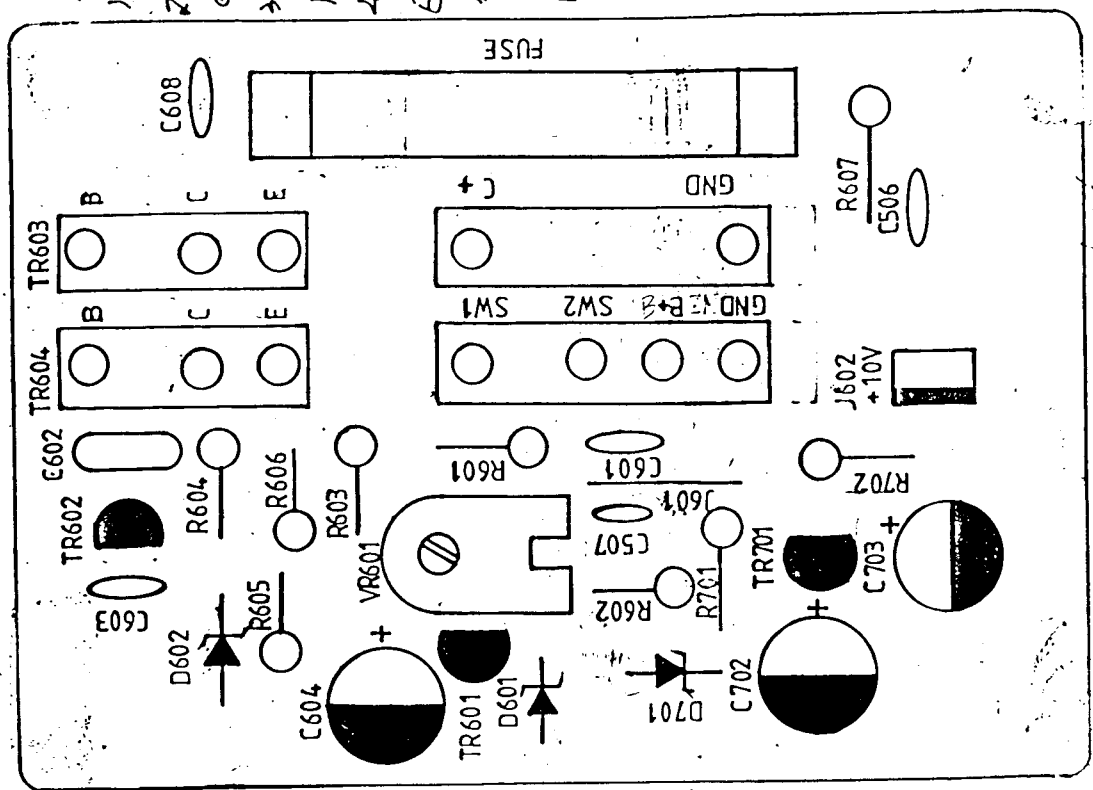
NOTE:

1. S: 2:1
2. 機種: SRC-3600
3. 圖號: SRC-3600-40

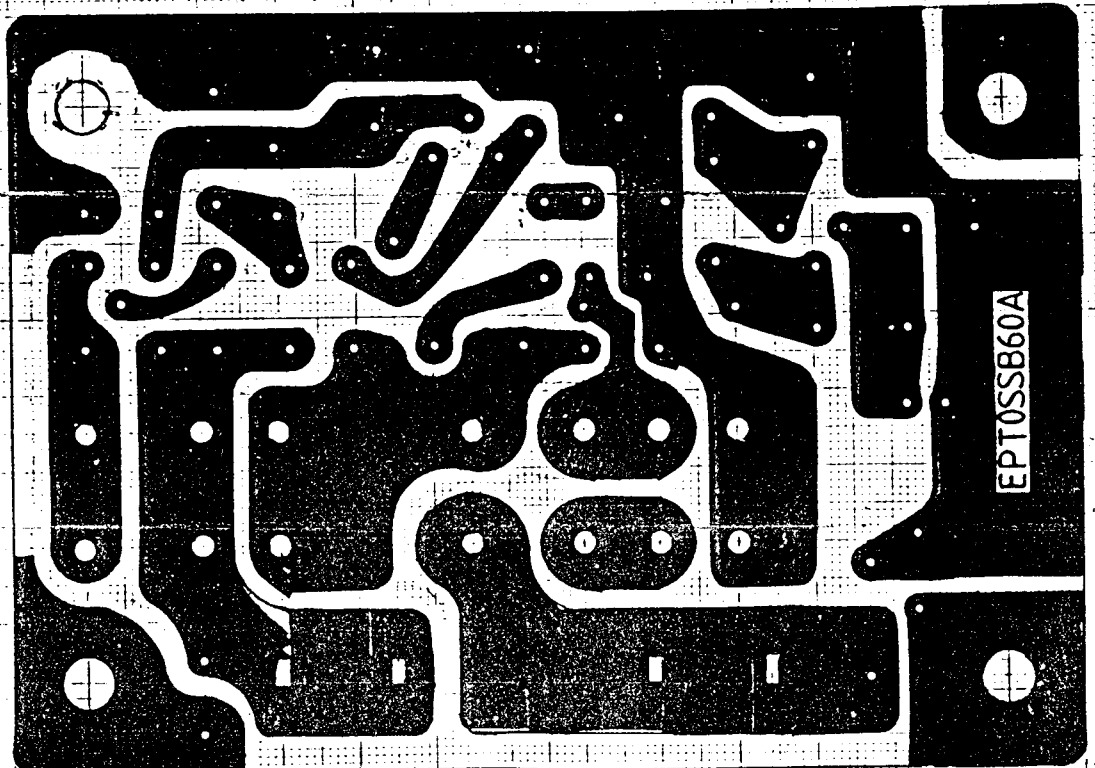
製圖: 林芳如

公司: 程遠

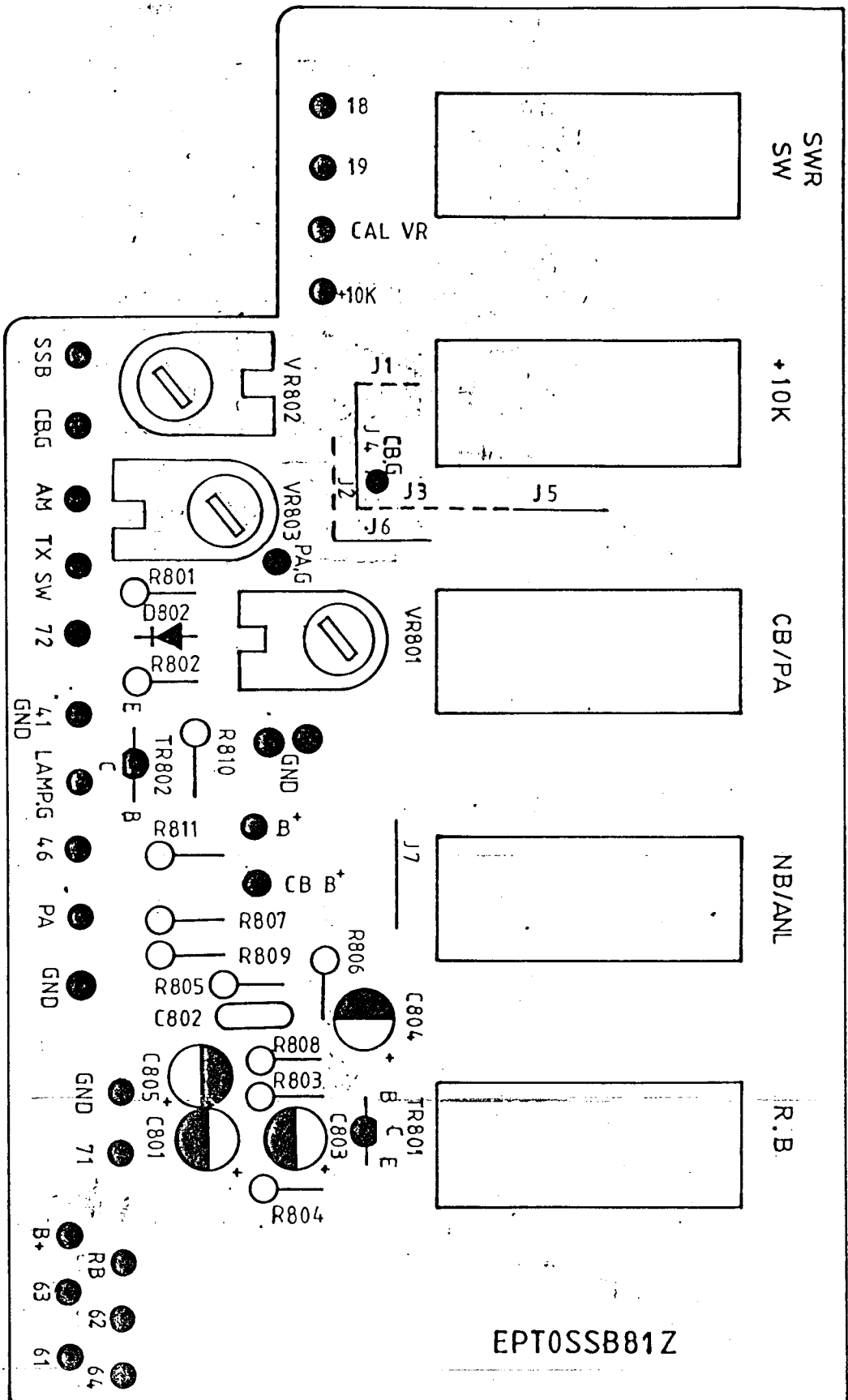
NOTE:
 1. S=Z=1
 2. 机种: GALAXY 55B
 3. 图名: POWER P.C.B
 4. 图号: EPT055B60A
 制图: 倪芳秀
 日期: 25.7.1



NOTE:
 1. S=Z=1
 2. 机种: GALAXY 55B
 3. 图名: POWER P.C.B
 4. 图号: EPT055B60A
 5. 尺寸: A=1.64
 B=0.8x1.7
 C=1.02φ
 D=1.0φ
 其餘0.8φ
 制图: 倪芳秀
 日期: 25.5.21.



EPT055B60A



(4)

Function Selector

50%

EPT0SSB81Z

程遠

NOTE:

- 1. AS = 2:1
- 2. 板種 = USB_{SN}
- 3. 圖名 = LEVER PCB
- 4. 圖號 = EPT0SSB1Z
- 5. 孔径

- A. 1X1.5-00
- B. 1.24-9
- C. 1.4-61

共餘 0.8

製圖

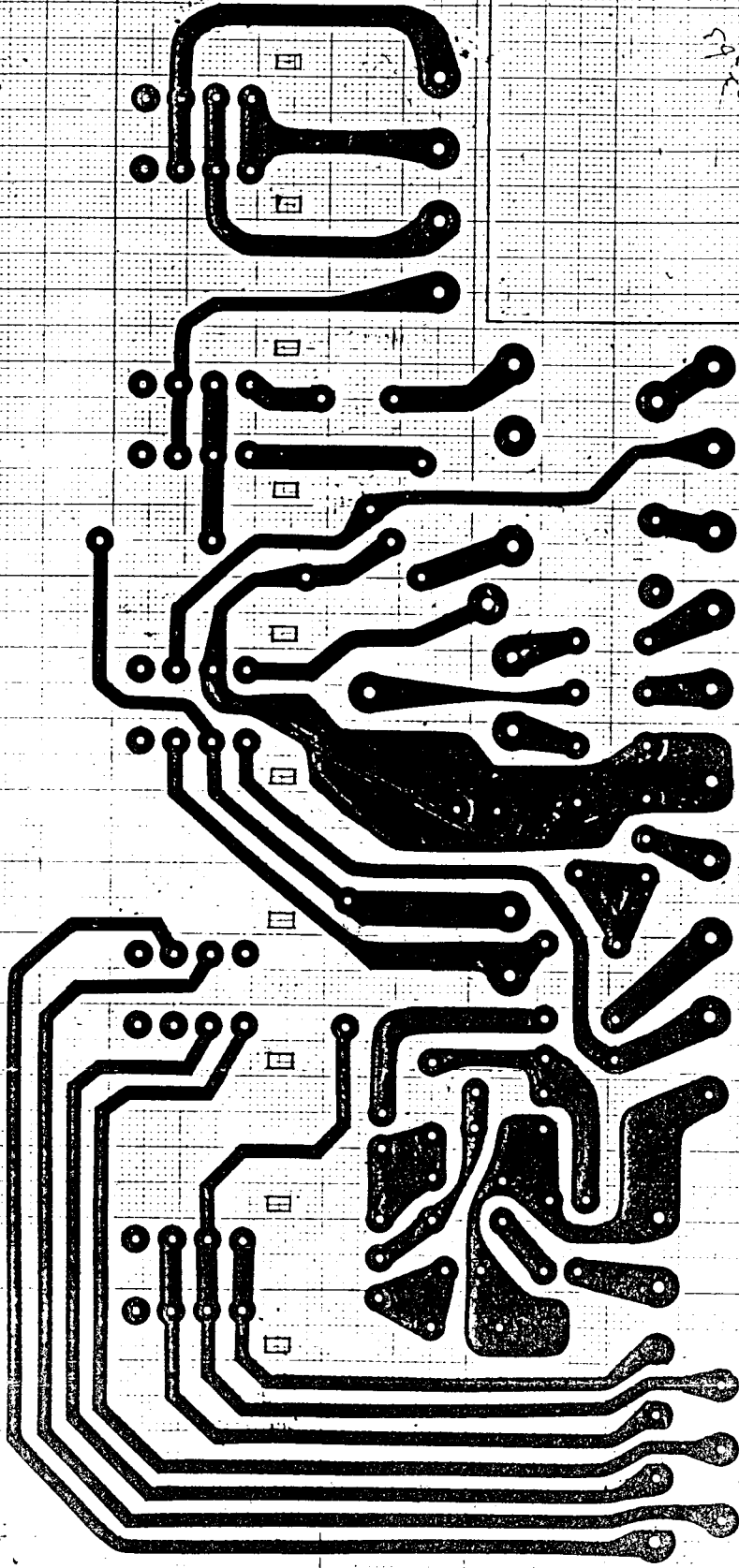
曾春

73.9.19

50/

加球

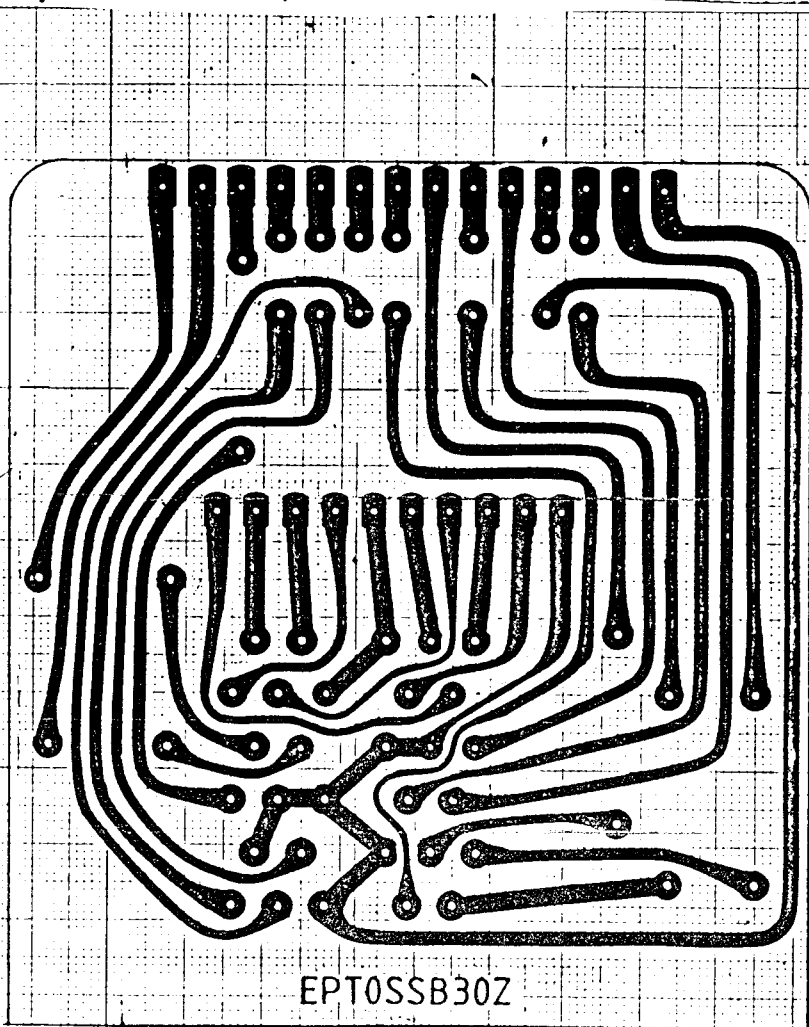
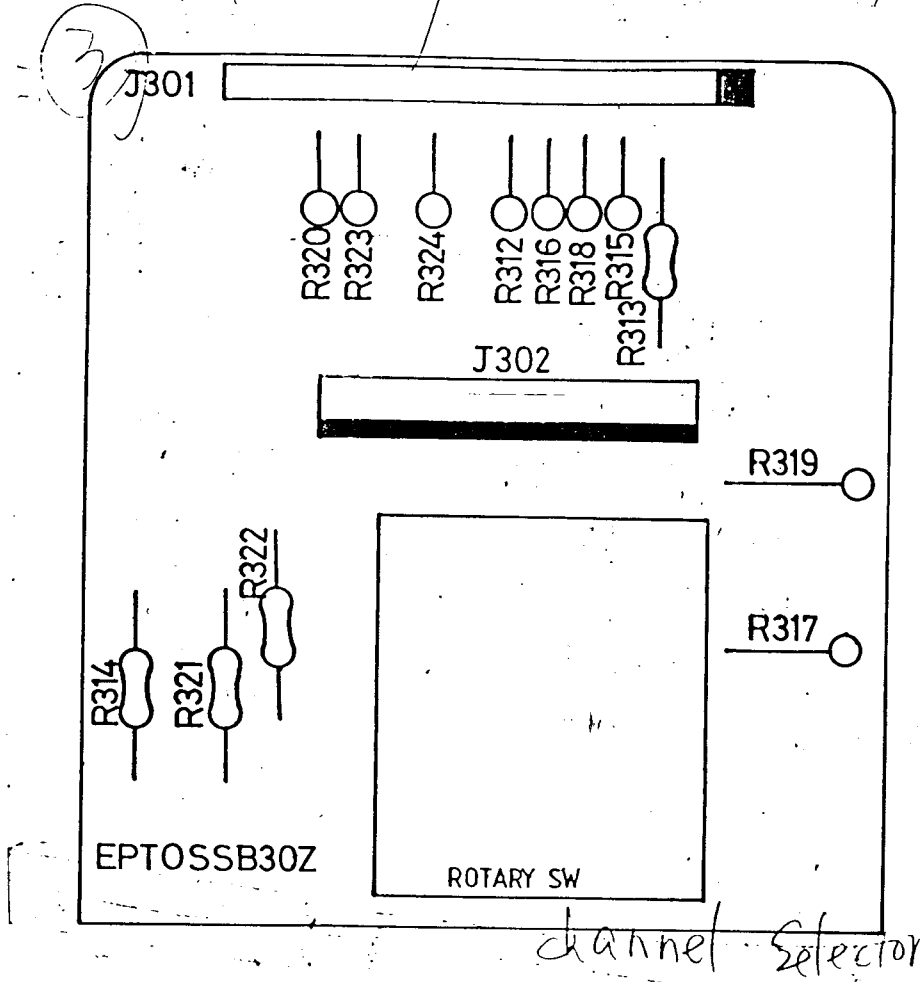
EPT0SSB1Z



50/

50/

50/



程遠

NOTE

1. S = 0:1
2. 板种 = SSB
3. 圖名 = R.S p.c.B
4. 圖号 = EPTOSSB02
5. 孔徑

A =

其餘 0.8⁺

製圖:

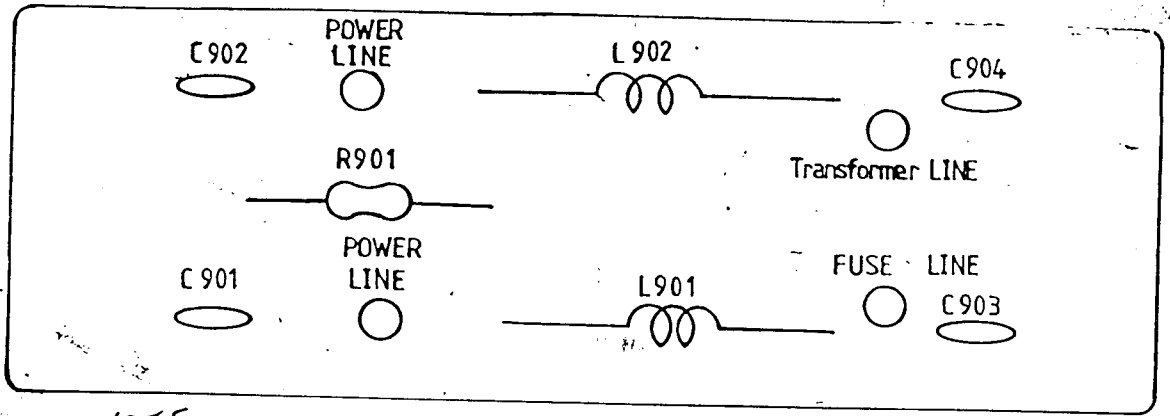
廖春

73.9.19

7-1

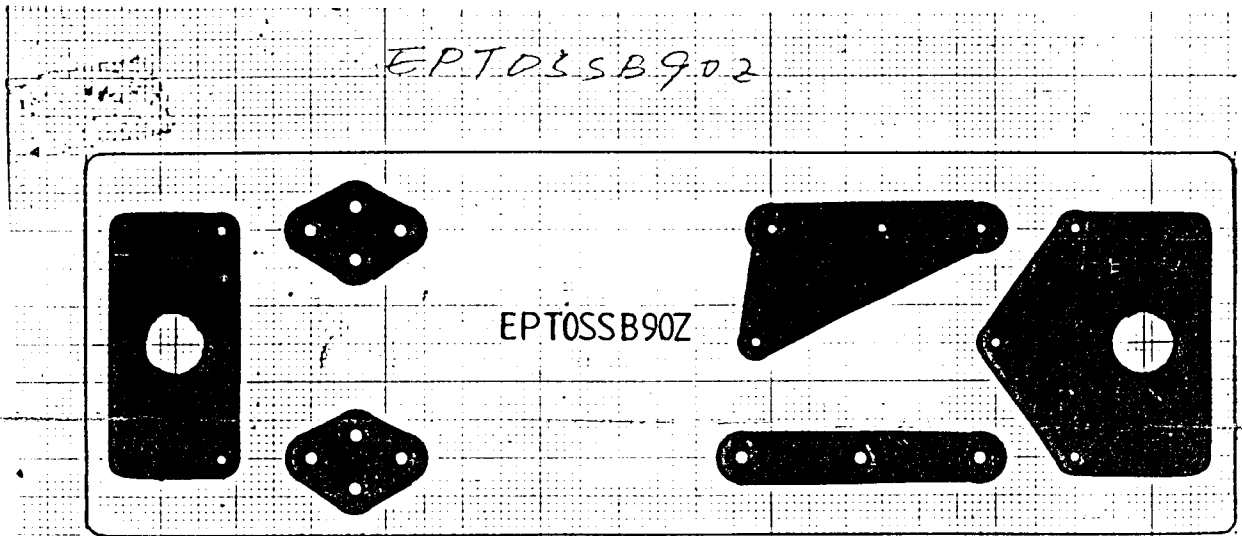
7/1

95



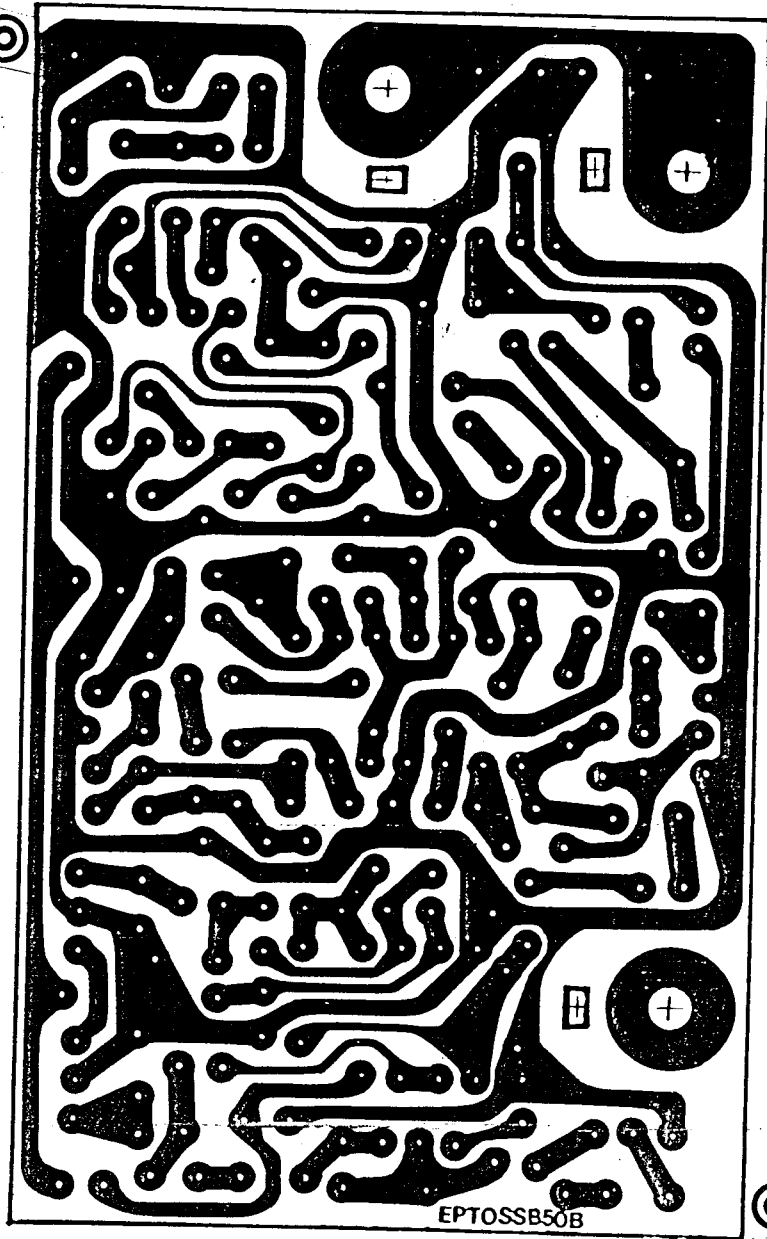
NOTE:
 1. S=2=1
 2. 机种: GALAXY 33B
 3. 图名: POWER INPUT P.C.B
 4. 图号: EPT055B90Z

制图: 田芳秀
 25.6.30



NOTE:
 1. S=2=1
 2. 机种: GALAXY 33B
 3. 图名: POWER INPUT P.C.B

4. 图号: EPT055B90Z
 5. 孔径: $\phi = 1.0$
 其他 $\phi = 0.8$
 制图: 田芳秀
 25.5.21



NOTES:

- 1. S=2:1
- 2. MODEL: GALAXY PLUS C=3'-2

B=5'-1

C=3'-2

EPTOSSB50B

3A

CRT G.S.A

