

**TS-590S
TH-D72A/E
Virtual COM Port Driver**

Last updated : November 30, 2010

● Introduction

- Thank you for choosing the Kenwood transceiver. You can connect your TS-590S or TH-D72A/E to a PC via a USB cable by installing the virtual COM port driver in the PC, and then utilize the Radio Control Program or Memory Control Program we have provided.
- This virtual COM port driver installation program is provided by [Silicon Laboratories Inc.](#)
- After reading through the following explanations, feel free to download and install the software.

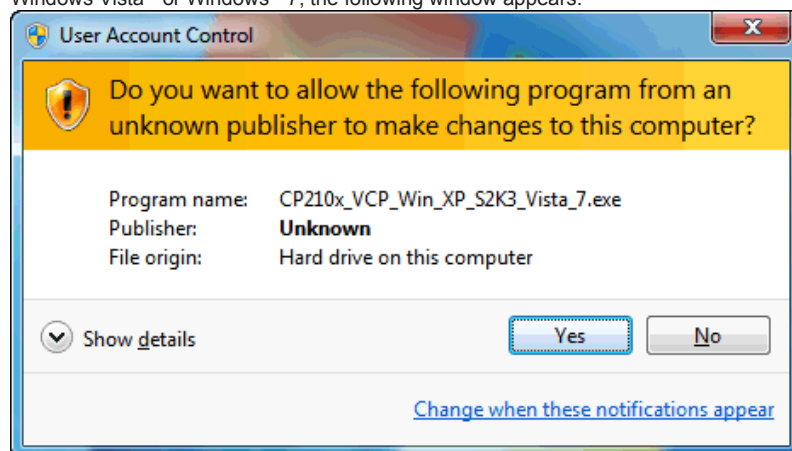
● Operating Environment

1. Operating System (OS)
 - Windows® XP (Service Pack 3 or later)
 - Windows Vista® (Service Pack 1 or later) (32-bit)
 - Windows® 7 (32-bit or 64-bit)
2. Peripheral Devices
 - USB 2.0 interface.

● Installing the virtual COM port driver

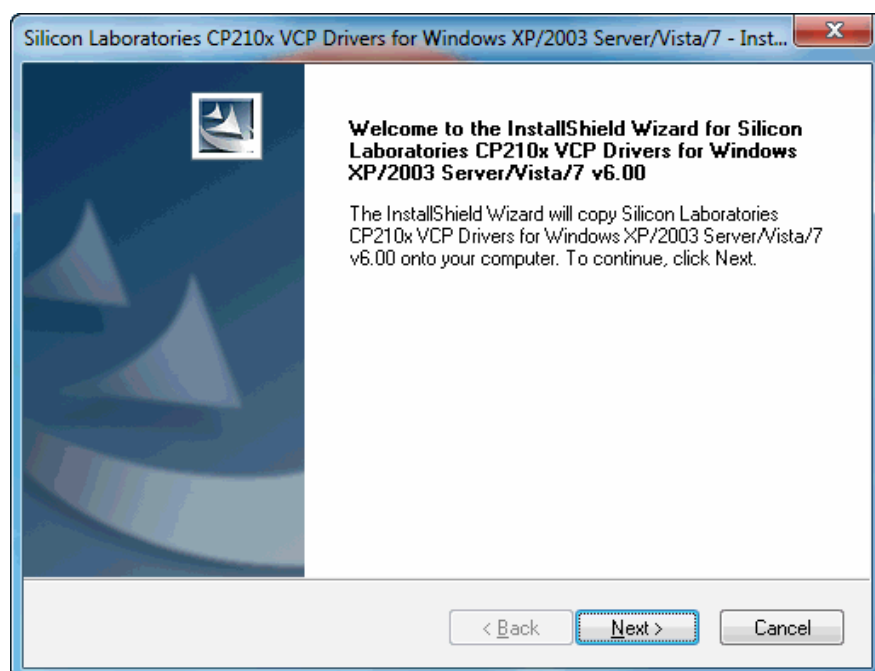
ATTENTION: Do not connect the transceiver to a PC using a USB cable before installing the virtual COM port driver.

1. To start, double click the "CP210x_VCP_Win_XP_S2K3_Vista_7.exe" installation program which you downloaded. If you are using Windows Vista® or Windows® 7, the following window appears.



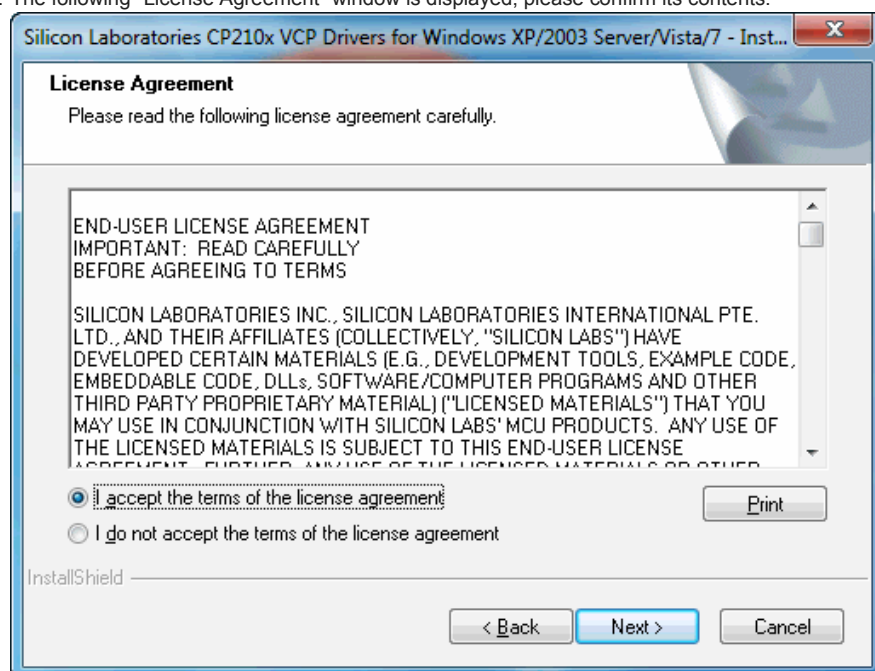
Click [Yes].

After a few moments, the following window is displayed.



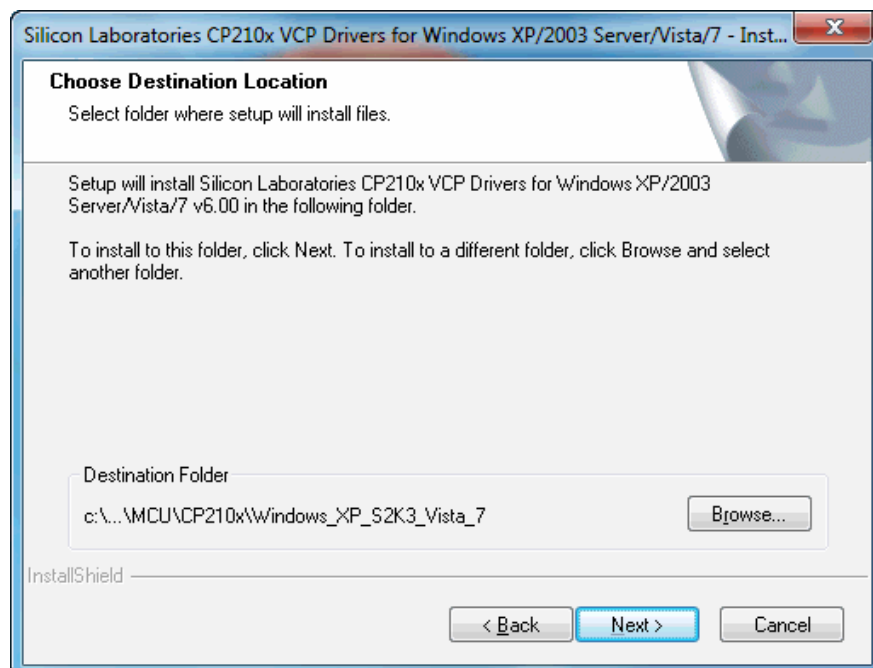
Click [Next>].

2. The following "License Agreement" window is displayed; please confirm its contents.



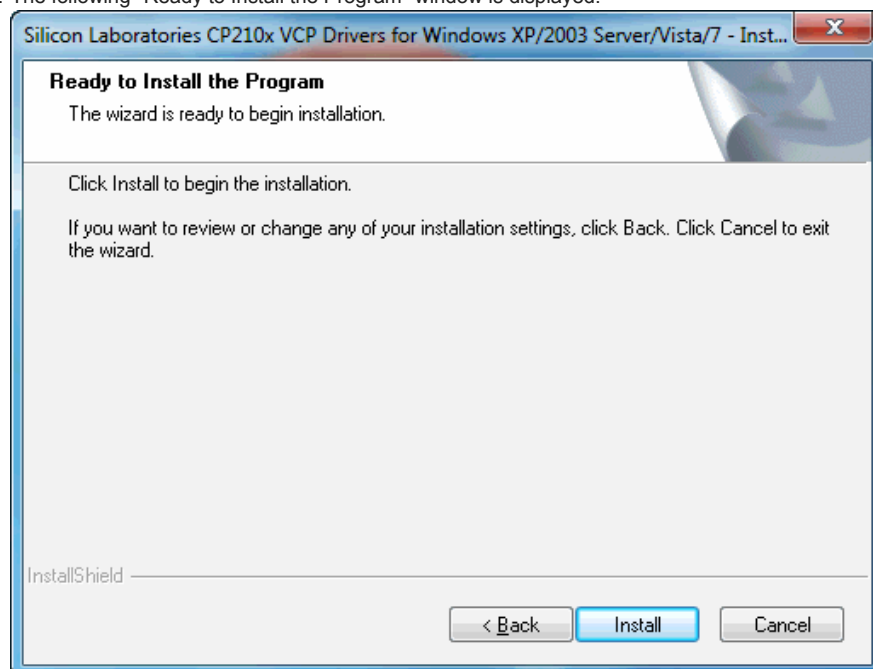
If you accept, check "I accept the terms of the license agreement" and click [Next>].

3. The following "Choose Destination Location" window is displayed.



Click [Next>].

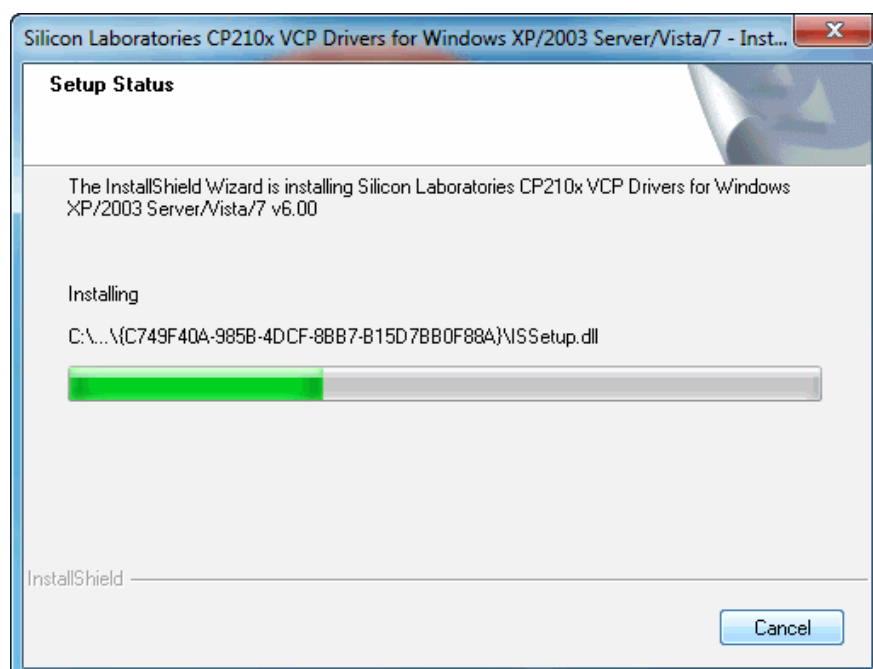
4. The following "Ready to Install the Program" window is displayed.



Click [Install].

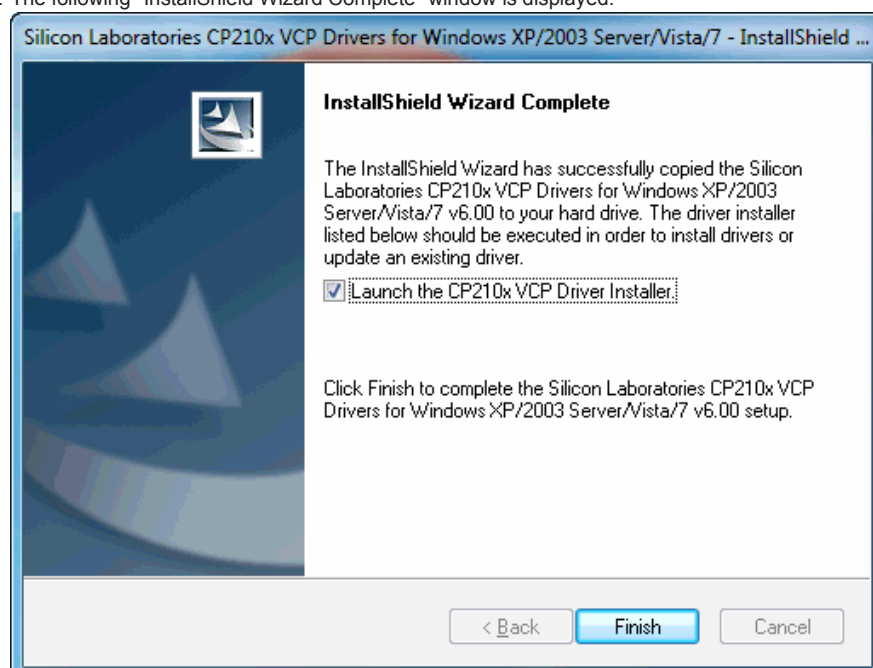
Wait until the installation is completed.

5. The following "Setup Status" window is displayed, and the driver installation will begin.



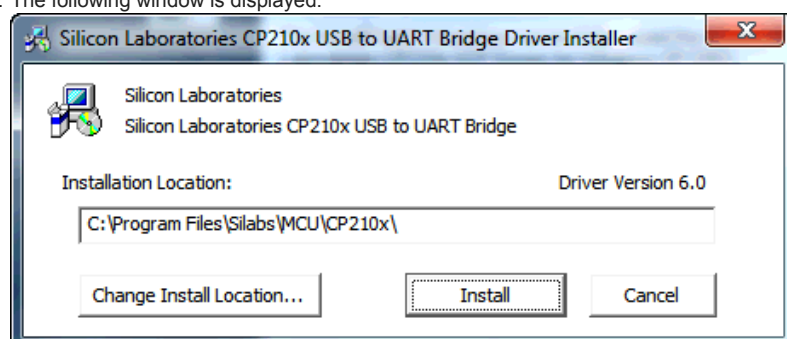
Wait until the installation is completed.

6. The following "InstallShield Wizard Complete" window is displayed.



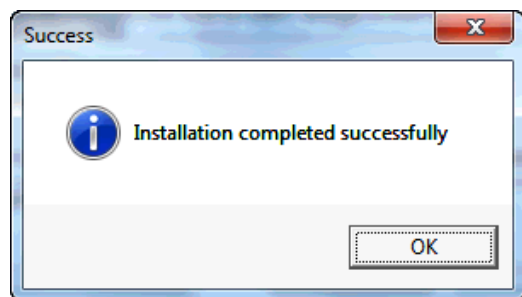
Confirm that "Launch the CP210x VCP Driver Installer." is checked, then click [Finish].

7. The following window is displayed.



Click [Install].

8. After a few moments, the following window is displayed.

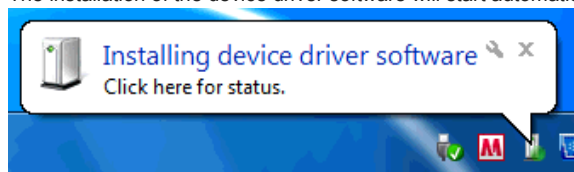


Click [OK] to finish.

● Connecting the transceiver to a PC

Turn the transceiver power ON, then connect it to a PC. The PC will detect new hardware, and the following message is displayed. (The message may vary depending upon the operating system.)

The installation of the device driver software will start automatically.



If a reboot request appears, please reboot the PC.

● Confirming the COM port number

Open the "Device Manager" to confirm which COM port number is assigned for connection with the transceiver.

(Confirm the COM port number after turning on the transceiver and connecting the transceiver to the PC using a USB cable.)

For Windows® XP

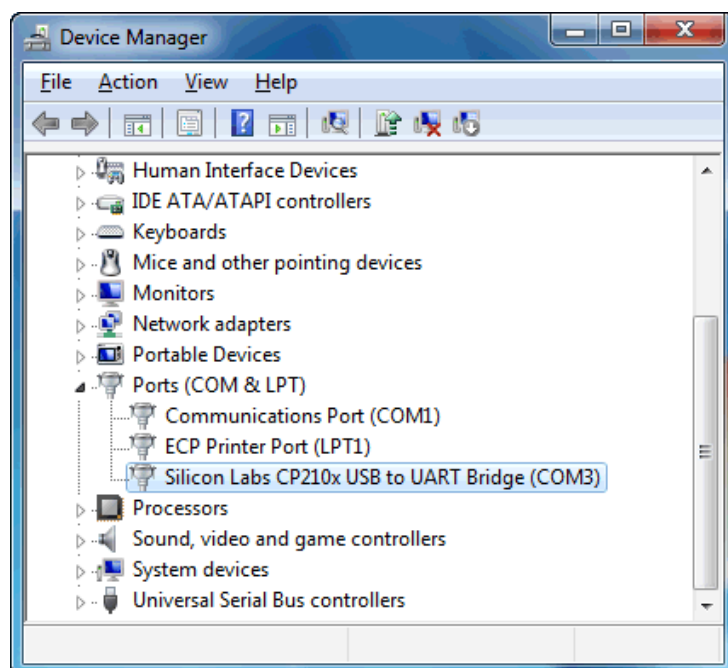
1. Right-click [My Computer], then click [Manage].
2. Click [Device Manager], in the left side of the [Computer Management] window.
3. [Device Manager] will be displayed in the right side of the window.

For Windows Vista®

1. Click the Windows® [Start] button.
 2. Click [Control Panel].
 3. Click [Hardware and Sound], in the [Control Panel] window.
 4. Click [Device Manager], in the [Hardware and Sound] window.
- (In the User Account Control dialog box, a security message will appear. Click [Continue].)
5. [Device Manager] window will appear.

For Windows® 7

1. Click the Windows® [Start] button.
 2. Right-click [Computer], then click [Properties].
 3. Click [Device Manager] in the displayed window.
- (If you don't log on to your PC as an "Administrator", a security message will appear. Click [OK].)
4. [Device Manager] window will appear.



Click "Ports (COM & LPT)" to extend it, then you can find "Silicon Labs CP210x USB to UART Bridge (COMxx)". The "COMxx" number is different depending on your PC.

In the above example, "Silicon Labs CP210x USB to UART Bridge (COM3)" is listed. This means that COM3 is assigned for the connection with the transceiver.

Select this port number in the configurations for communication in the software you are using.

If you agree with the details listed above, click the following link to download the virtual COM port driver installation program.

["CP210x VCP Win XP S2K3 Vista 7.exe" \(v6.1\) 6.56MB download](#)

You can also download the virtual COM port driver installation program from the [Silicon Laboratories website](#). (The URL link is subject to change.).

[For inquiries, please access](#)

* Windows® XP, Windows Vista®, Windows® 7 and Windows logo are registered trademarks of Microsoft Corporation in the United States and/or other countries.